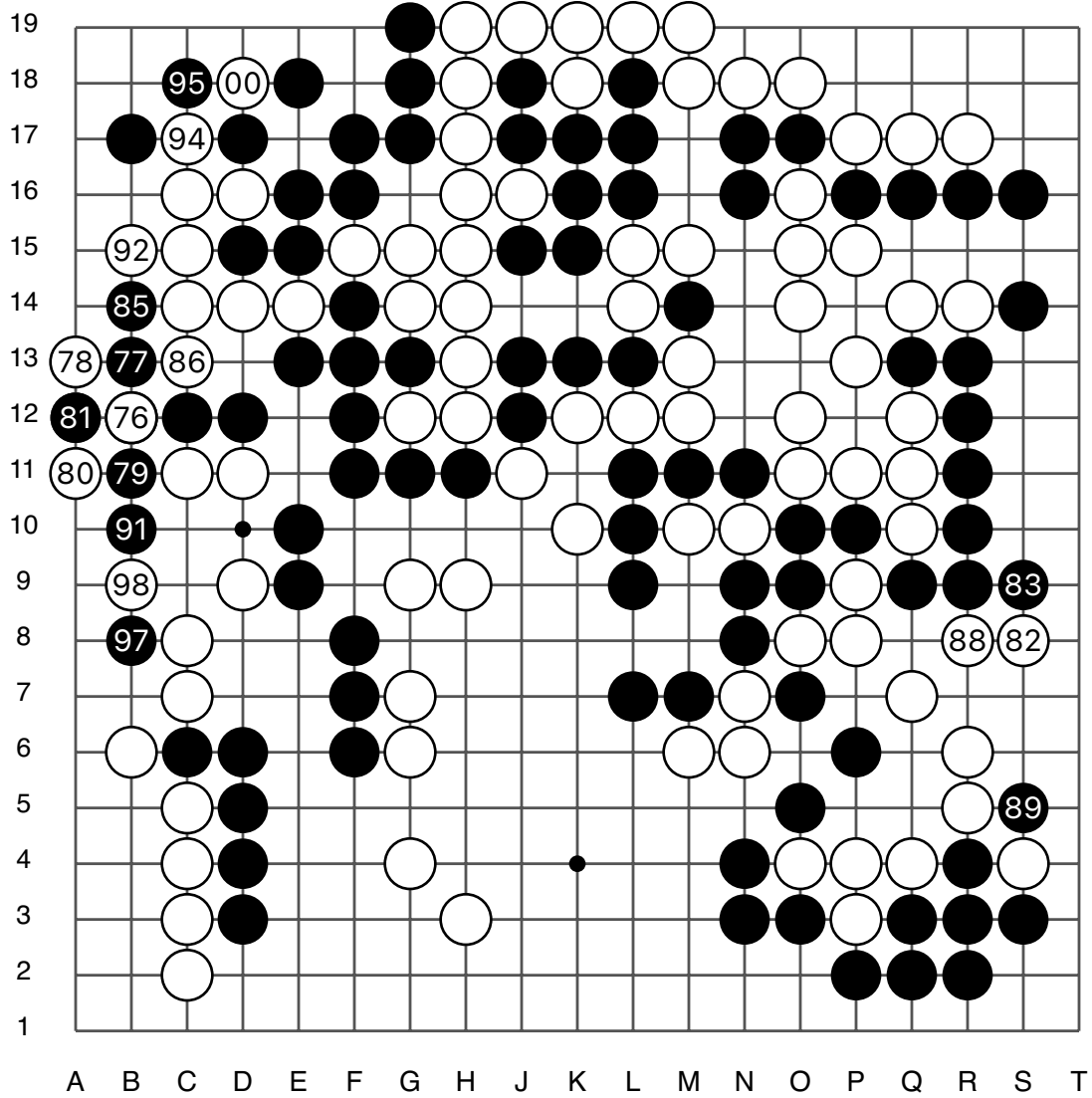
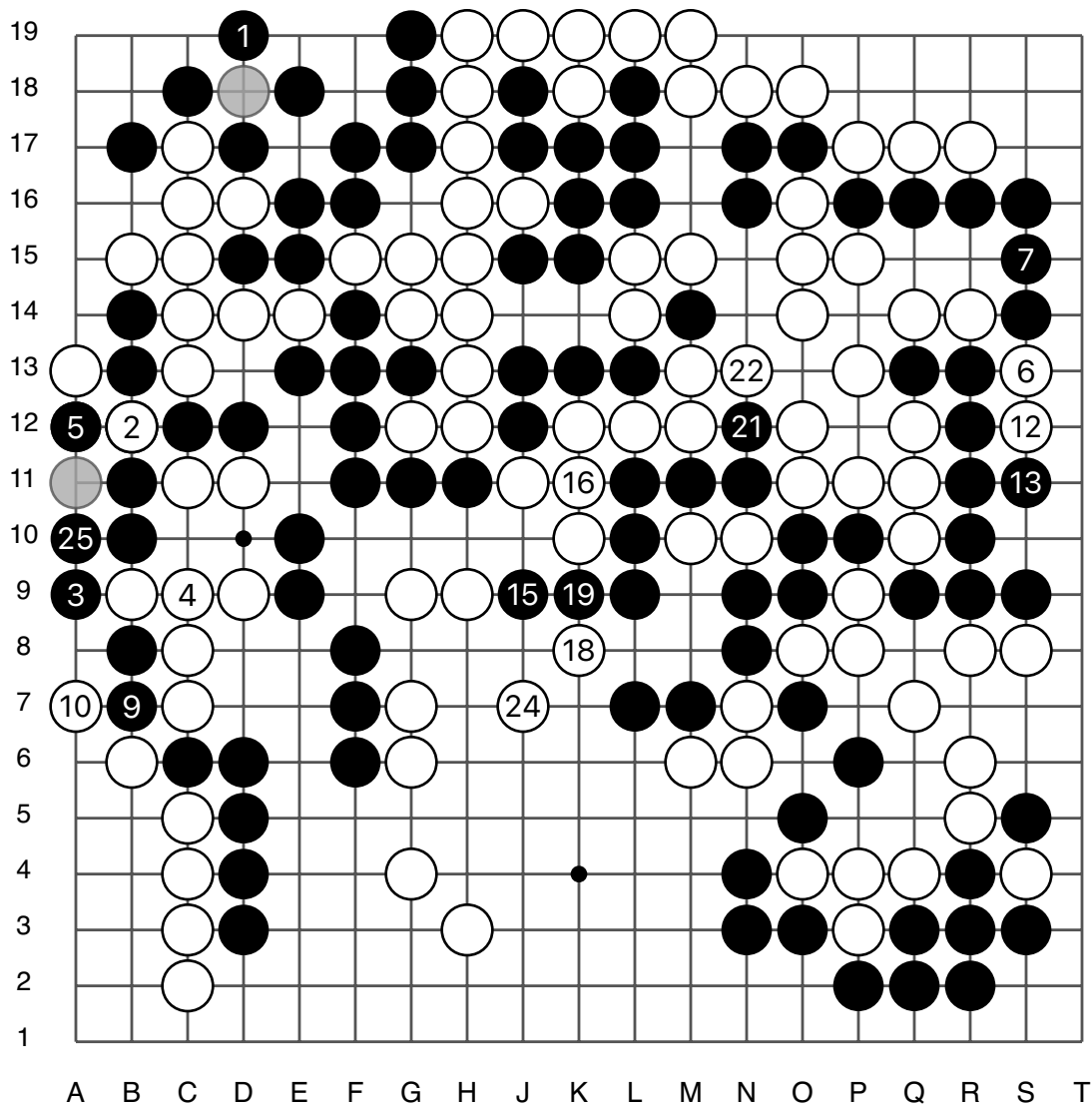


$\textcircled{70} = \textcircled{60} \quad \textcircled{72} = \textcircled{51}$



$$\textcircled{84} \textcircled{90} \textcircled{96} = \textcircled{76}$$

$$\textcircled{87} \textcircled{93} \textcircled{99} = \textcircled{81}$$



$(8) (14) (20) = (2)$ $(11) (17) (23) = (5)$

