

一目了然的官子价值

目录

1 目以下	1
1 目以下	3
1 目以下	5
1 目	7
1 目	9
1 目强	11
1 目半	13
1 目半	15
1 目以上 2 目以下	17
先手 1 目弱	18
先手 1 目弱	20
先手 1 目	22
先手 1 目	24

先手 1 目	26
先手 1 目	28
先手 1 目	30
先手 1 目	32
先手 1 目强	34
2 目	36
2 目	38
2 目	40
2 目	42
2 目	44
2 目	46
2 目	48
2 目	50
2 目	52
2 目	54
约 2 目	56
约 2 目	58
2 目强	60
2 目强	62
2 目半	64
先手 2 目弱	66
先手 2 目	68
先手 2 目强	70
3 目	72

3 目	74
3 目	76
3 目	78
3 目弱	80
3 目强	82
先手 3 目	84
先手 3 目	86
先手 3 目	88
先手 3 目	90
先手 3 目	92
先手 3 目	94
逆先手 3 目	96
逆先手 3 目	98
逆先手 3 目	100
4 目	102
4 目	104
4 目	106
4 目	108
4 目	110
4 目	112
4 目弱	114
4 目强	116
先手 4 目	118
先手 4 目	120

先手 4 目	122
先手 4 目强	124
逆先手 4 目	126
逆先手 4 目	128
逆先手约 4 目	130
双方先手 4 目	133
双方先手 4 目	135
双方先手 4 目	137
双方先手 4 目	139
4 目弱	141
5 目	143
5 目弱	145
5 目弱	147
5 目强	149
5 目半	151
先手 5 目	153
先手 5 目	155
逆先手 5 目	157
逆先手 5 目	159
逆先手 5 目	161
6 目	163
6 目	165
6 目	167
6 目	169

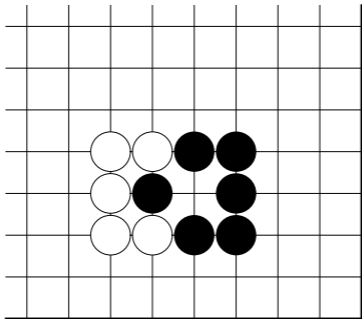
6 目	171
6 目	173
6 目	175
6 目	177
先手 6 目	179
先手 6 目	181
先手 6 目强	183
逆先手 6 目弱	185
逆先手 6 目	187
双方先手 6 目	189
双方先手 6 目	191
7 目	193
7 目	195
约 7 目	197
约 7 目	199
先手 7 目	201
先手 7 目	203
先手 7 目	205
先手 7 目	207
先手 7 目	209
先手 7 目	211
先手 7 目	213
先手 7 目	215
逆先手 7 目	217

8 目	219
8 目	221
8 目	223
8 目	225
8 目	227
8 目	229
8 目强	231
先手 8 目	233
先手约 8 目	235
双方先手 8 目	237
先手约 8 目	239
9 目	241
9 目	243
约 9 目	245
约 9 目	247
逆先手 9 目	249
先手 9 目	251
先手 9 目	253
先手 9 目	255
先手 9 目	257
10 目	259
约 10 目	261
10 目	263
10 目	265

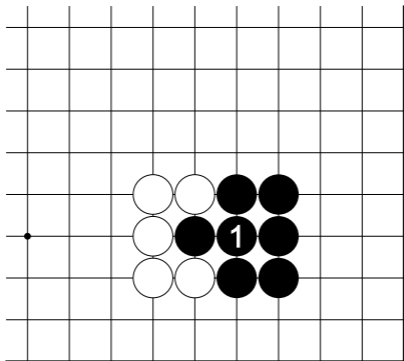
10 目	267
10 目	269
10 目	271
约 10 目	273
10 目半	275
先手约 10 目	277
先手约 10 目	279
约 11 目	281
约 11 目	283
11 目	285
约 11 目	287
11 目	289
11 目	291
12 目	293
12 目	295
12 目	297
12 目	299
先手 12 目	301
13 目	303
13 目	305
约 13 目	307
约 13 目	309
14 目	311
14 目	313

14 目	315
14 目	317
14 目	319
14 目	321
约 16 目	323
16 目	325
16 目	327
17 目	329
17 目	331
约 17 目	333
约 17 目	335
约 18 目	337
约 18 目	339
18 目	341
18 目	343
19 目	345
20 目以上	347
约 24 目	349

1 目以下

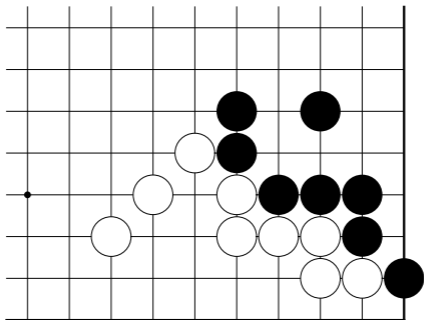


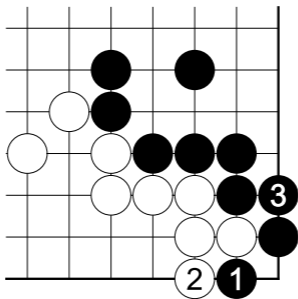
如不特别说明，全为后手，先手都会注明的！
——叶公好棋（飞扬棋侠）



三分之一目

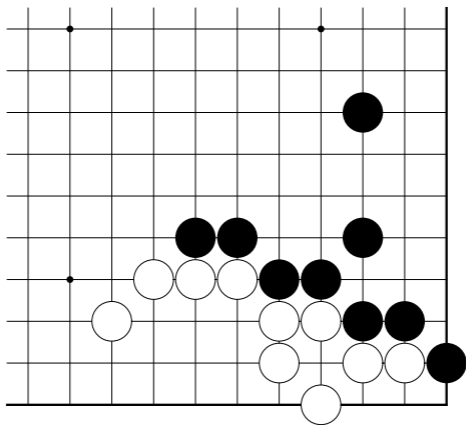
1 目以下

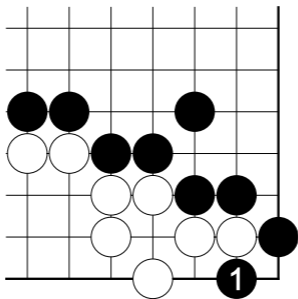




三分之二目

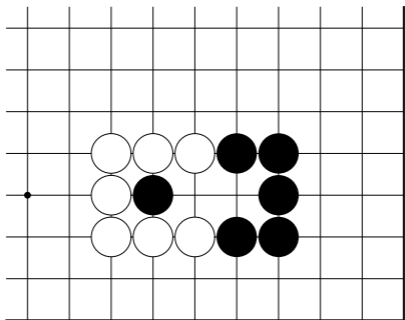
1 目以下

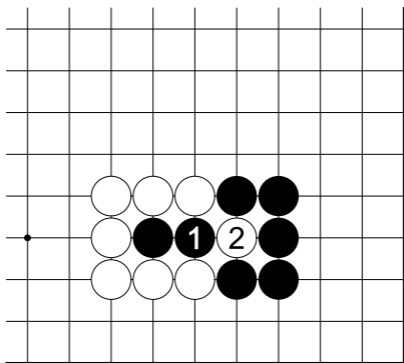




1 目以下

1 目

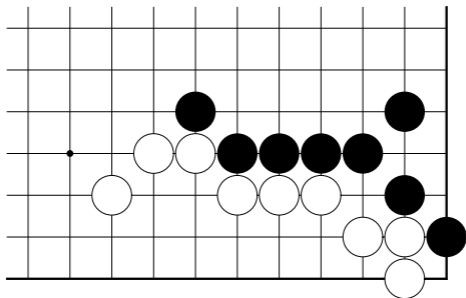


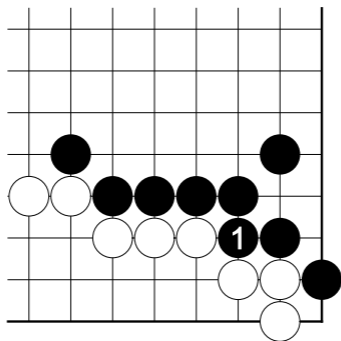


3 = 1.

1 目

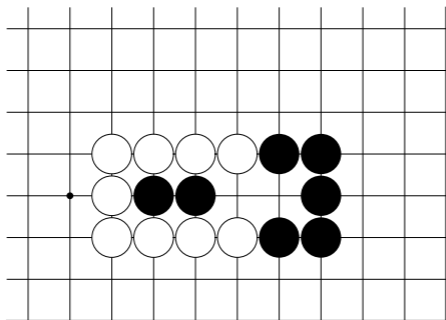
1 目

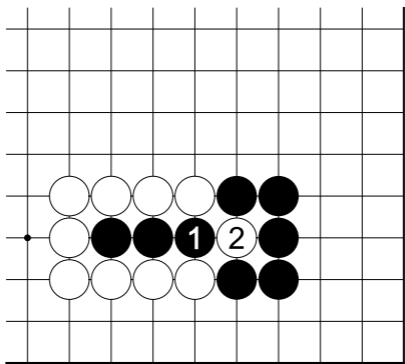




1 目

1 目強

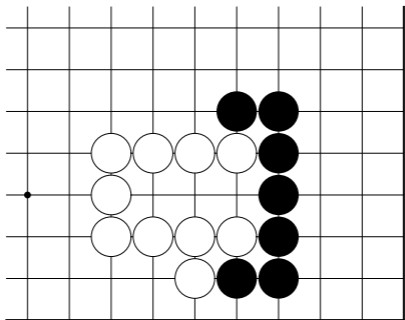


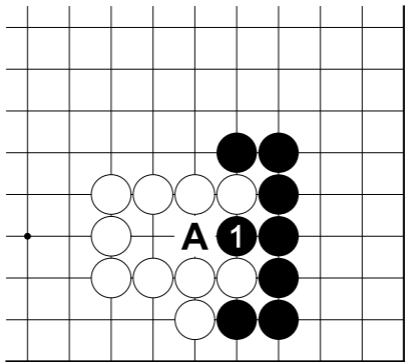


3 = 1.

1 目強

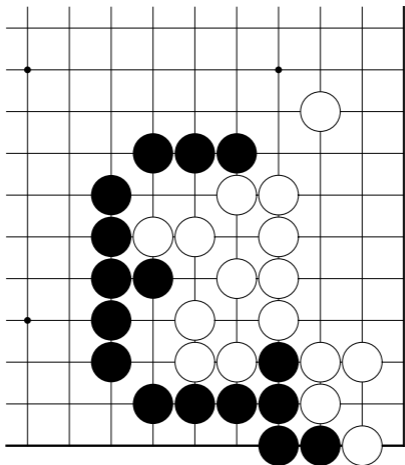
1 目半

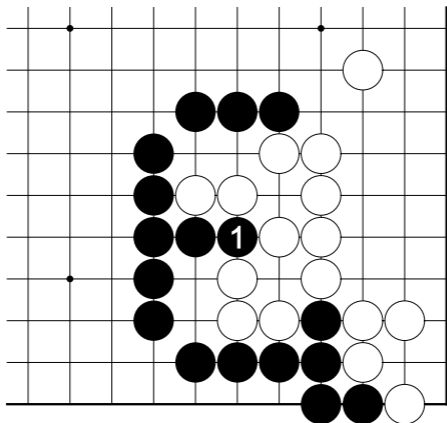




1 目半白如立即 A 位应，则成黑先手 1 目。

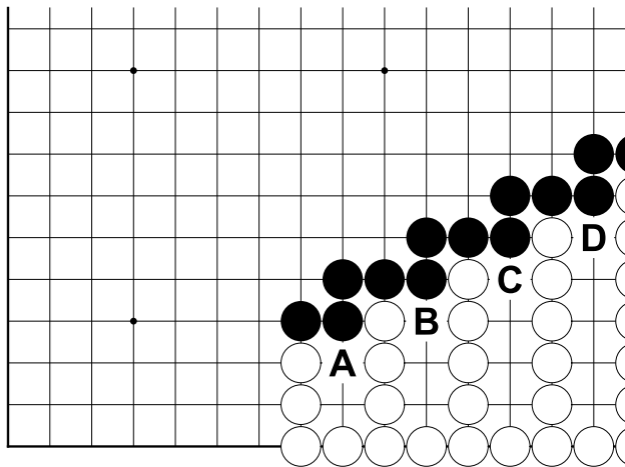
1 目半





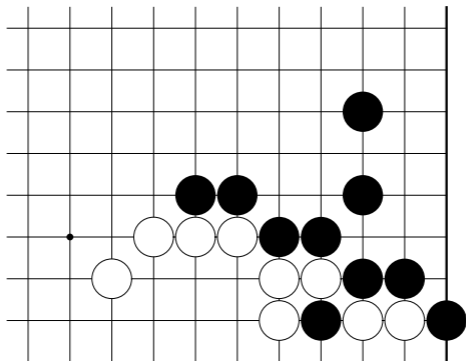
1 目半

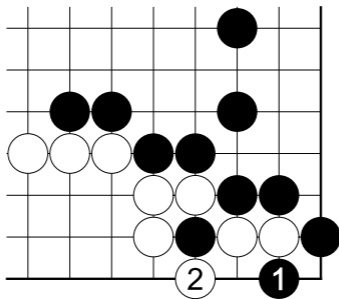
1 目以上 2 目以下



1 目以上 2 目以下黑 a 是 1 目，b 是 1 目半，c 是 1 又 $\frac{3}{4}$ 目，d 是 1 又 $\frac{7}{8}$ 目，e 是 1 又 $\frac{15}{16}$ 目，f 是 1 又 $\frac{31}{32}$ 目。

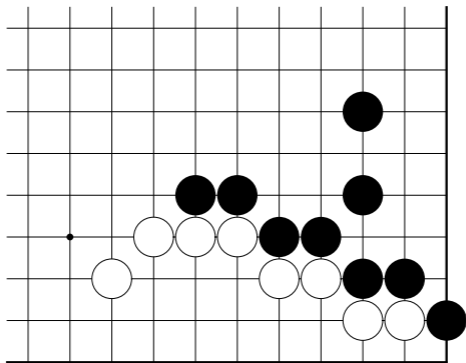
先手 1 目弱

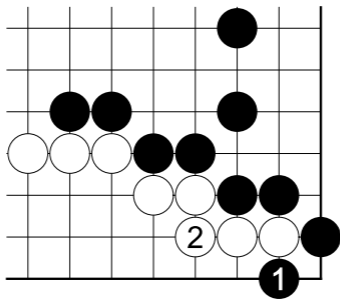




先手 1 目弱

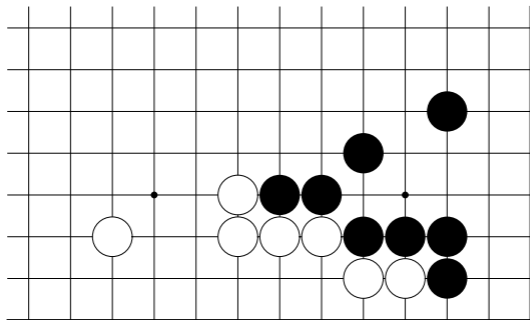
先手 1 目弱

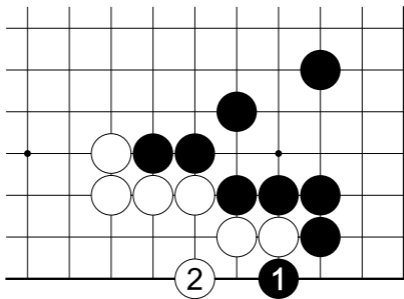




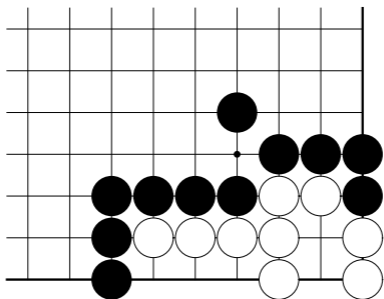
先手 1 目弱

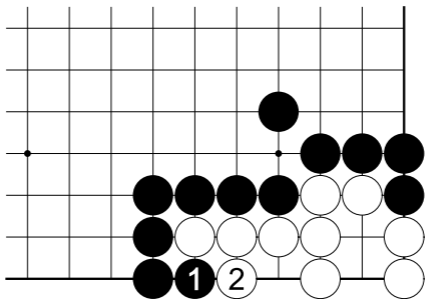
先手 1 目





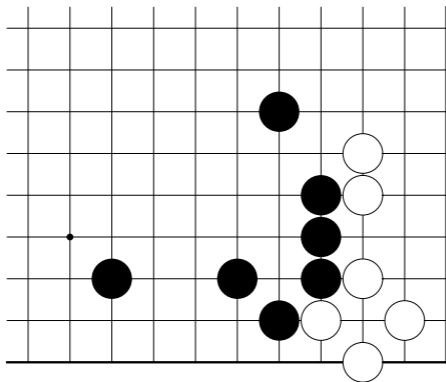
先手 1 目

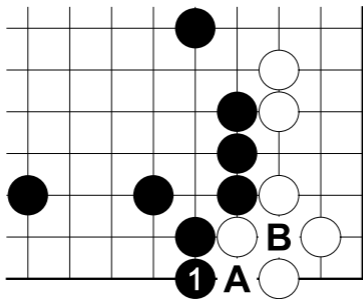




先手 1 目

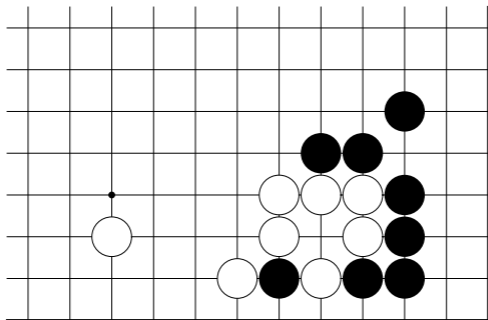
先手 1 目

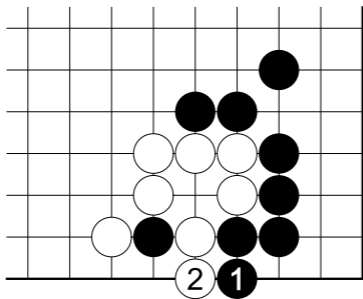




先手 1 目对黑 1，白多半在 a 位应，先手 1 目。
如不应，以后黑 a 白 b，可以认为黑 1 是后手 2 目。

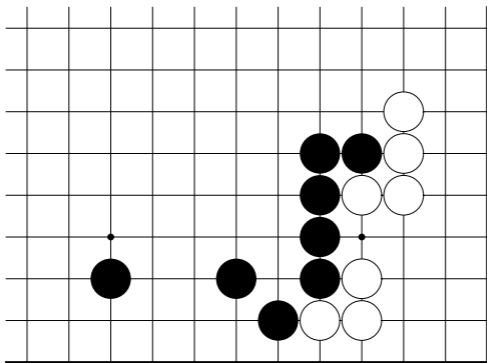
先手 1 目

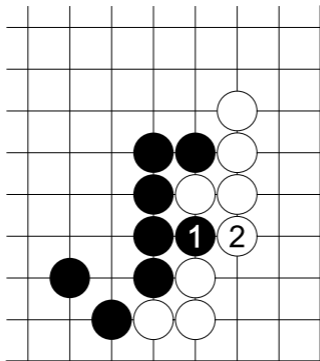




先手 1 目黑 2 位扳接是后手 2 目，可自由选择。

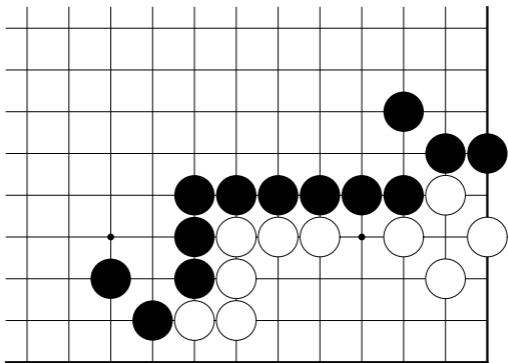
先手 1 目

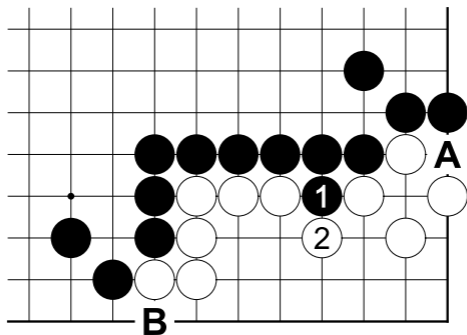




先手 1 目

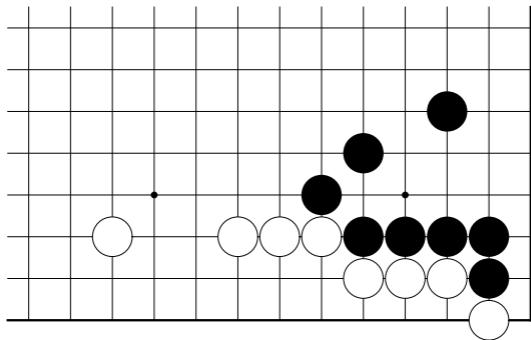
先手 1 目

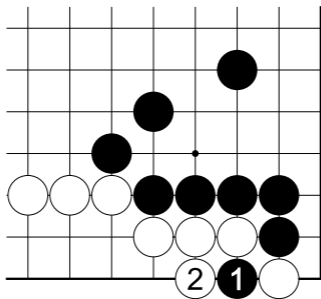




先手 1 目黑 A 也是先手 1 目，黑 B 是后手 2 目。

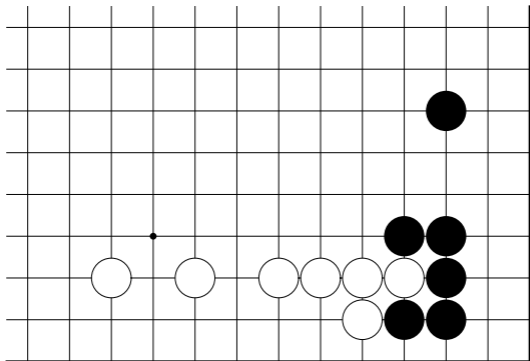
先手 1 目强

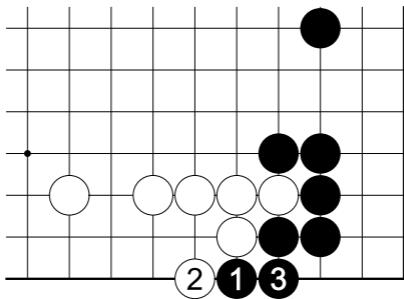




先手 1 目强

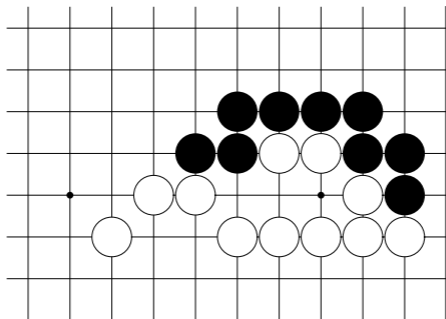
2 目

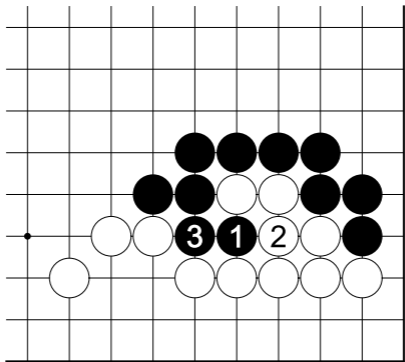




2 目

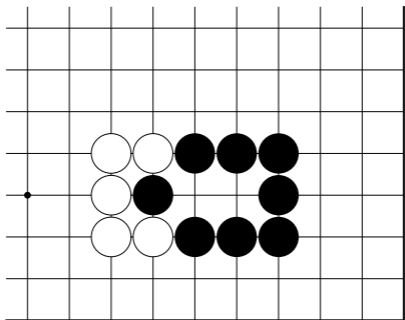
2 目

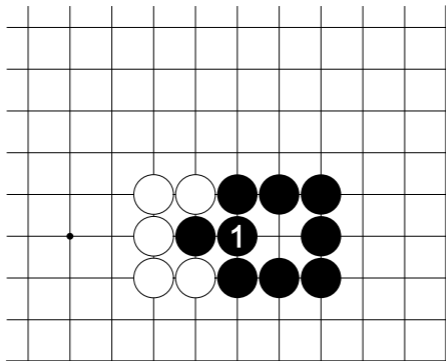




2 目

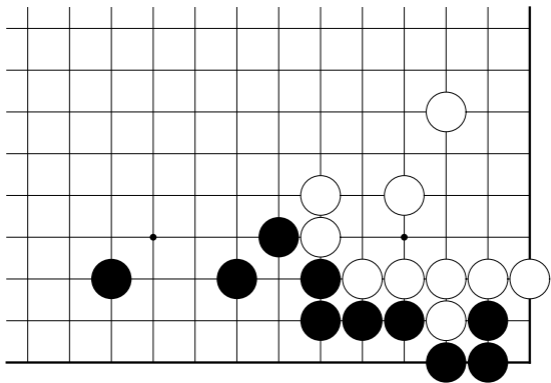
2 目

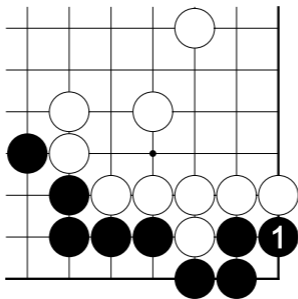




2 目

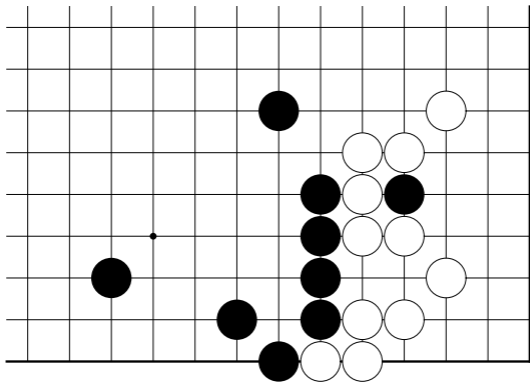
2 目

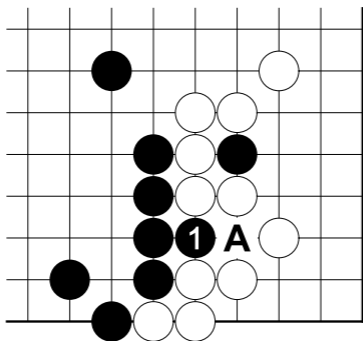




2 目

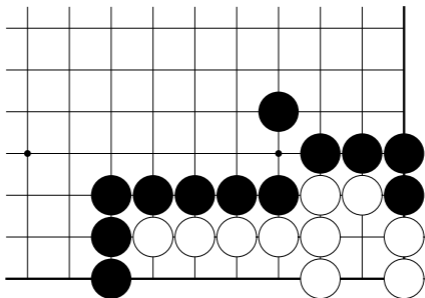
2 目

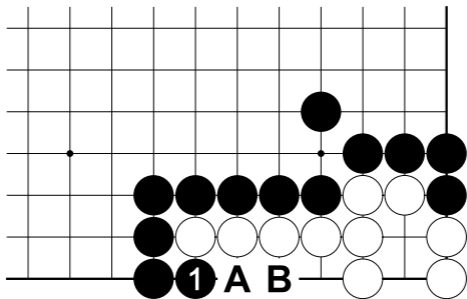




2 目 A 是黑的权利。

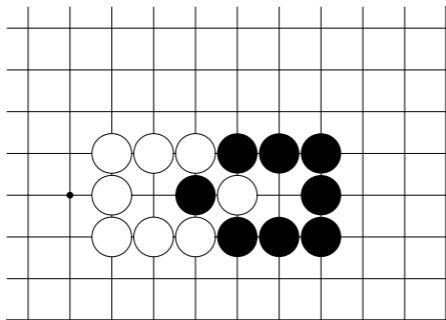
2 目

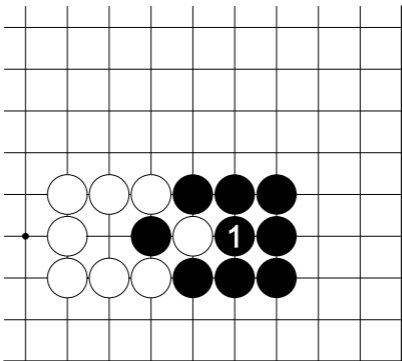




2 目之后黑 A 白 B 是黑的权利。

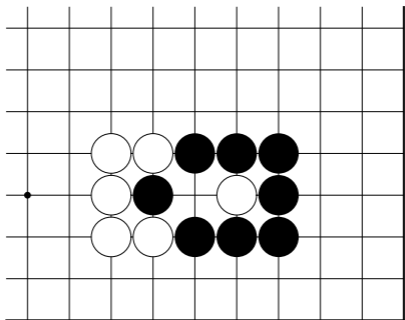
2 目

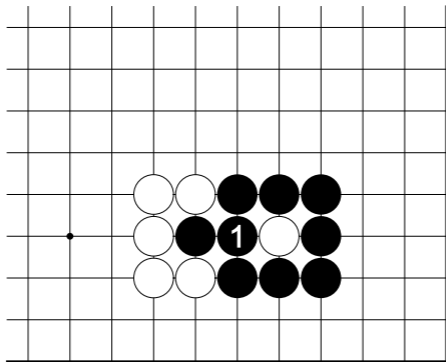




2 目

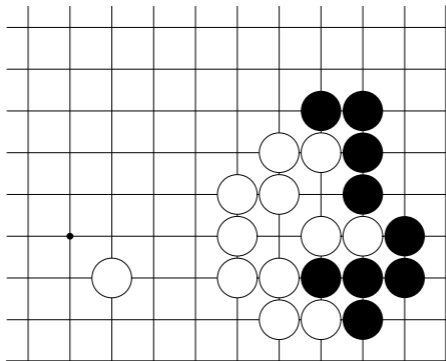
2 目

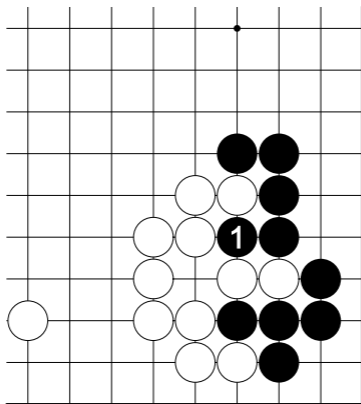




2 目

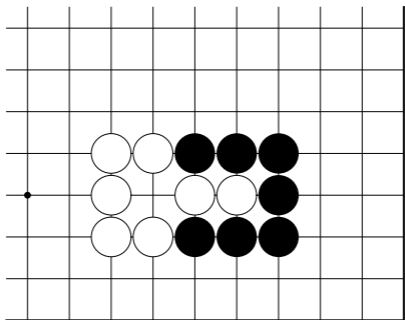
2 目

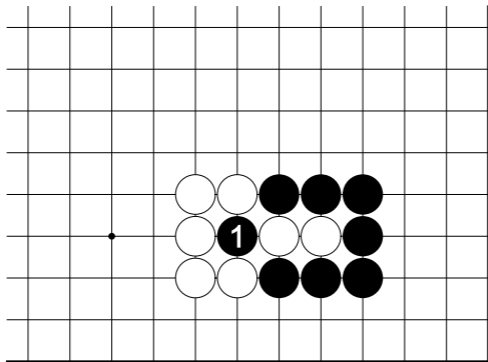




2 目

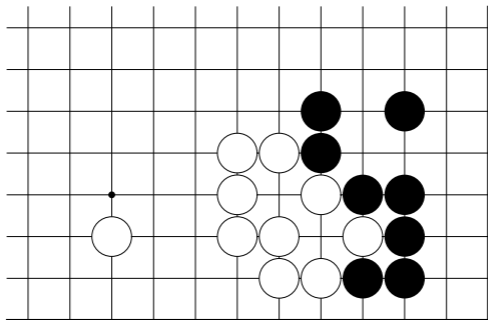
2 目

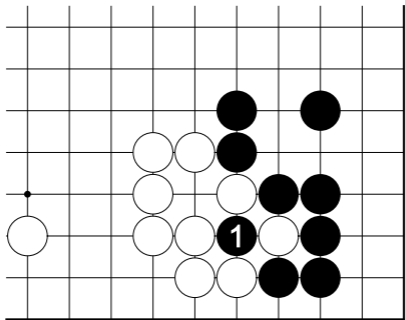




2 目

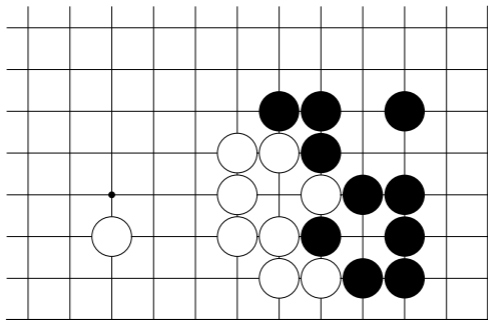
约 2 目

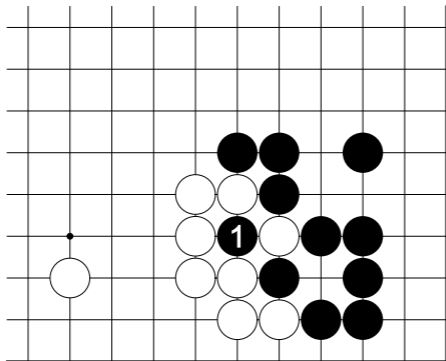




约 2 目

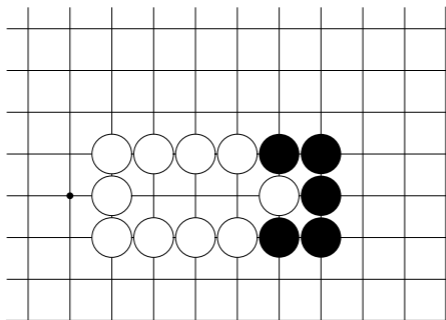
约 2 目

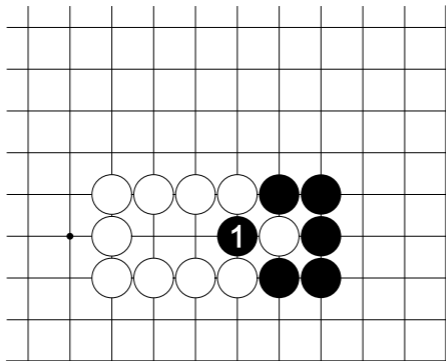




约 2 目

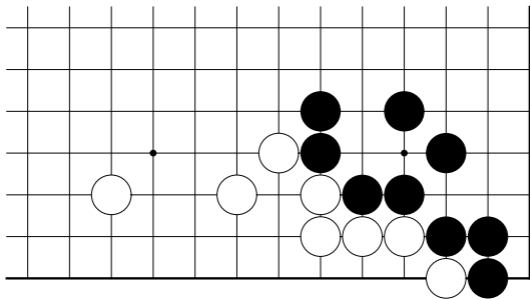
2 目強

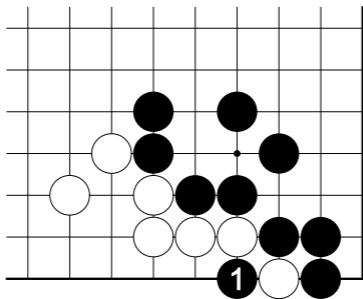




2 目強

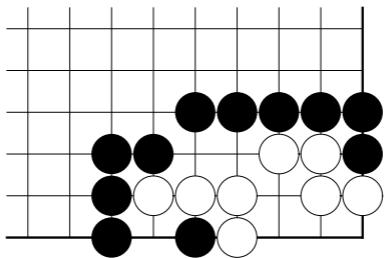
2 目強

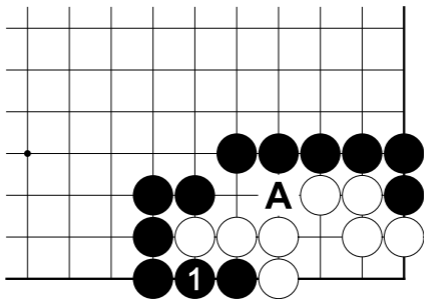




2 目強

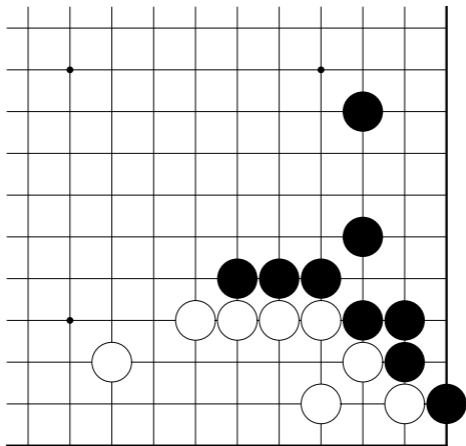
2 目半

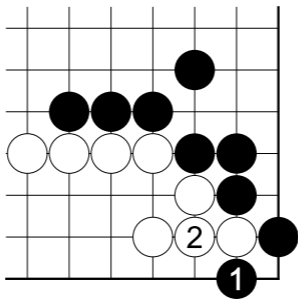




2 目半

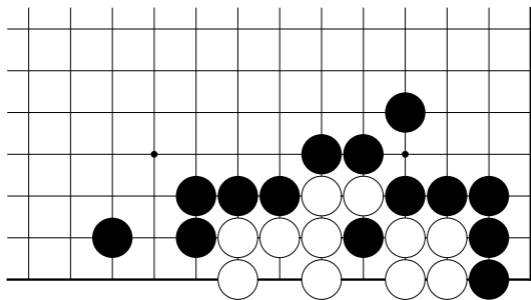
先手 2 目弱

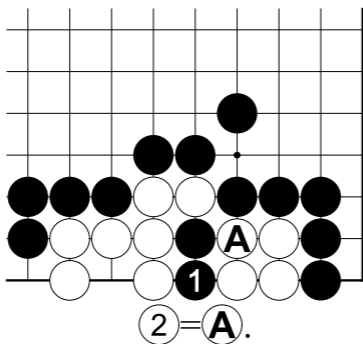




先手 2 目弱

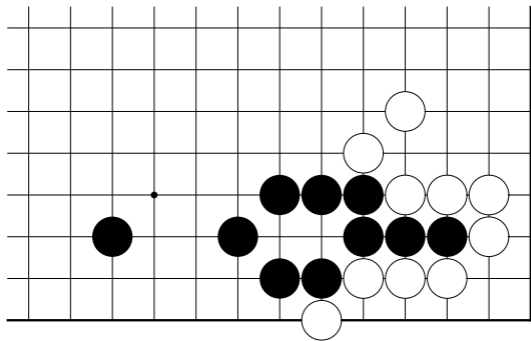
先手 2 目

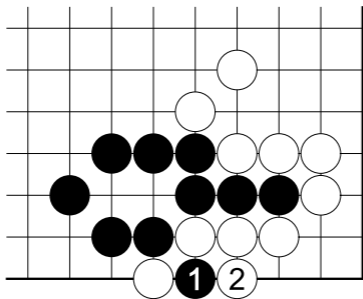




先手 2 目

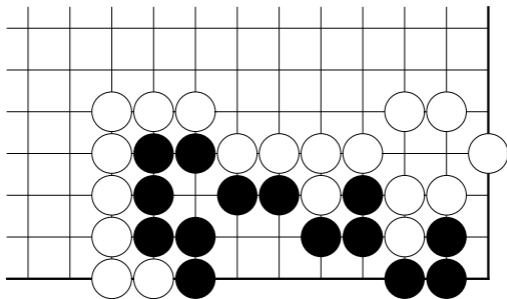
先手 2 目强

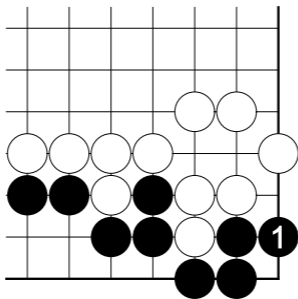




先手 2 目强

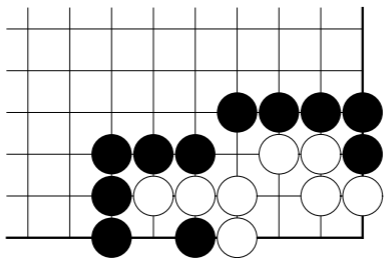
3 目

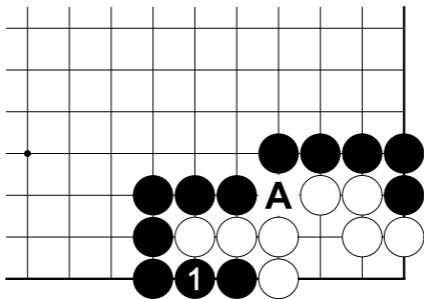




3 目

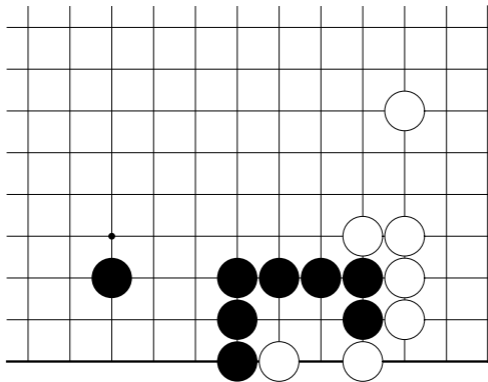
3 目

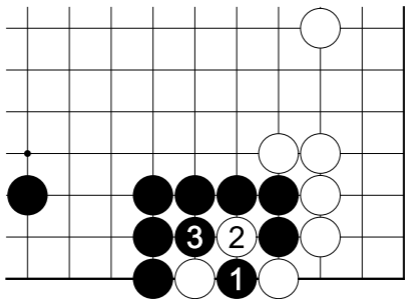




3 目

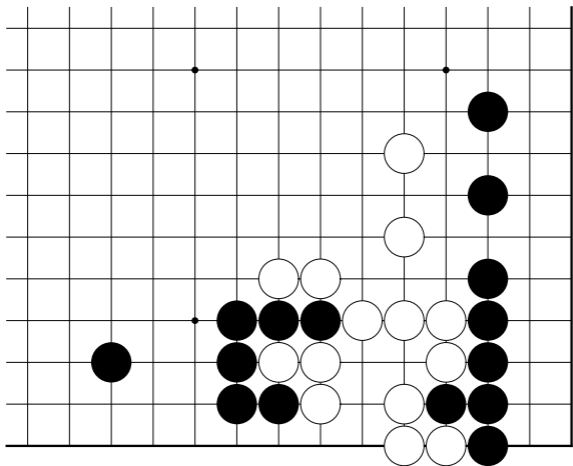
3 目

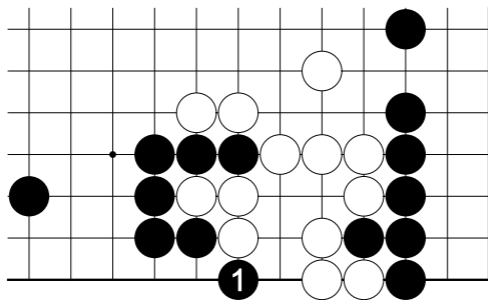




3 目

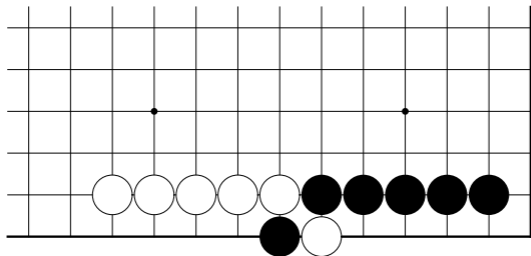
3 目

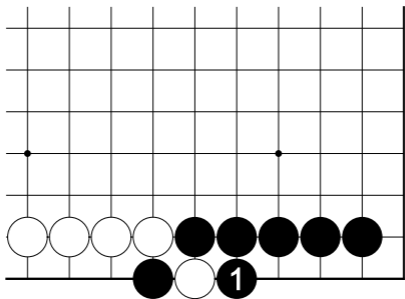




3 目

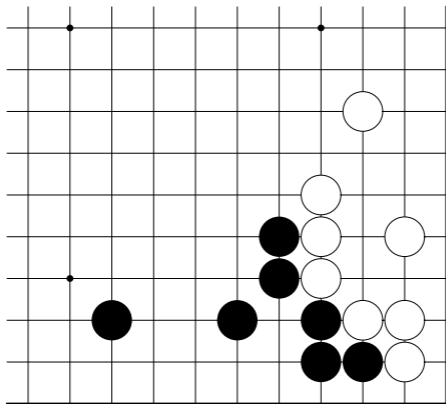
3 目弱

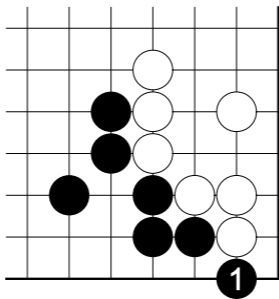




3 目弱

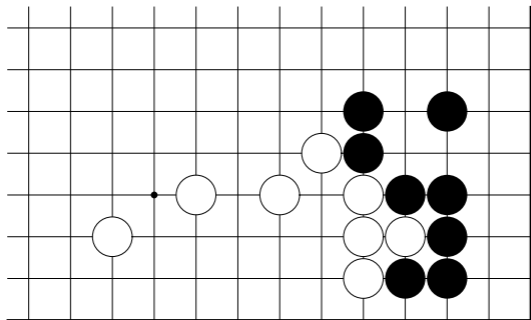
3 目強

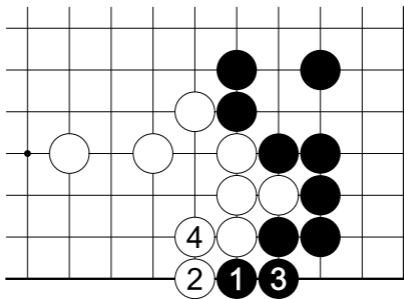




3 目强比一路的 2 目扳接大。

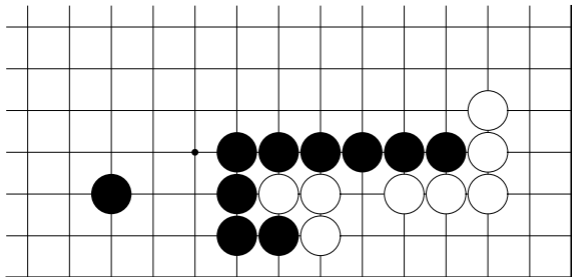
先手 3 目

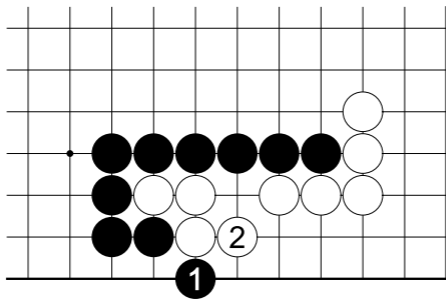




先手 3 目

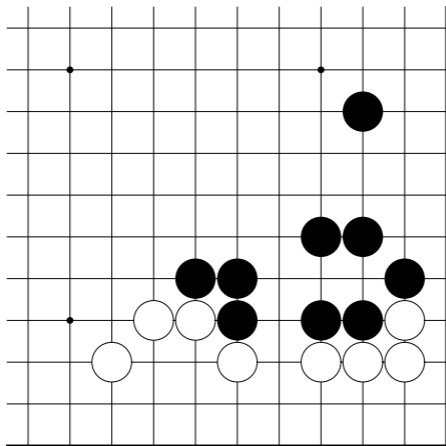
先手 3 目

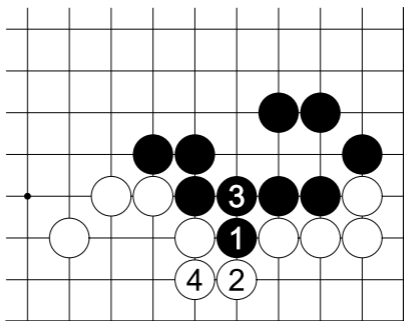




先手 3 目

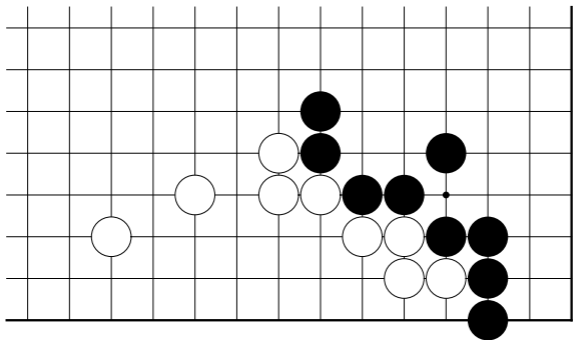
先手 3 目

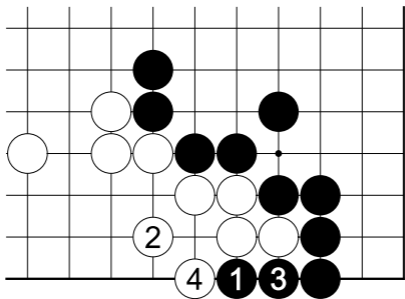




先手 3 目

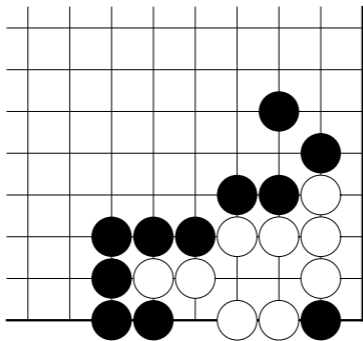
先手 3 目

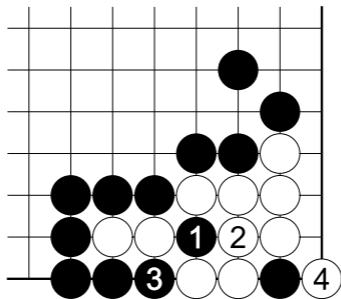




先手 3 目

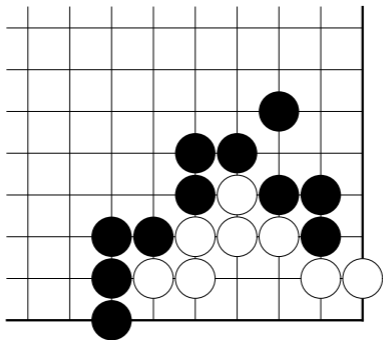
先手 3 目

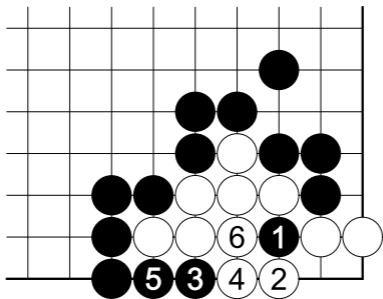




先手 3 目

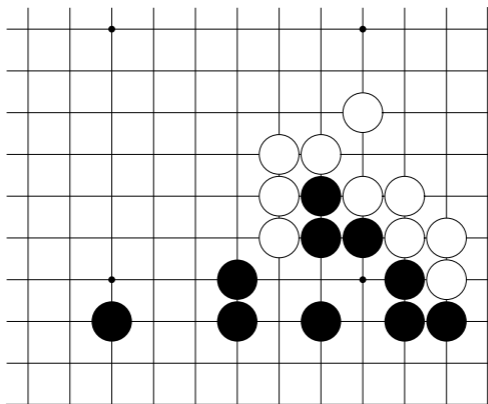
先手 3 目

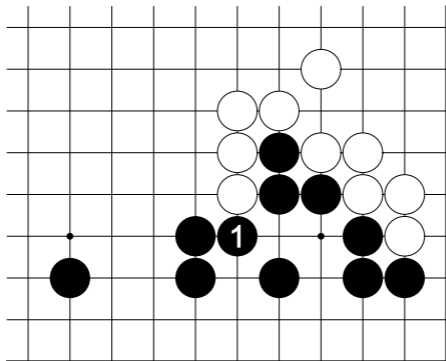




先手 3 目

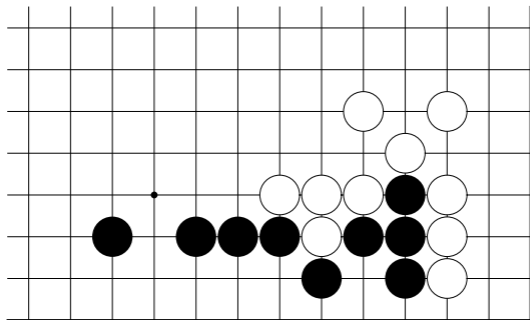
逆先手 3 目

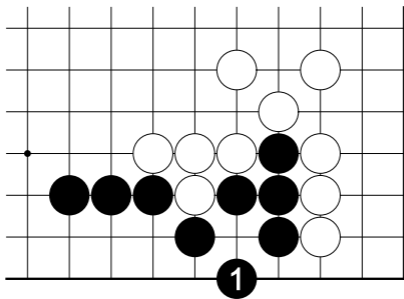




逆先手 3 目

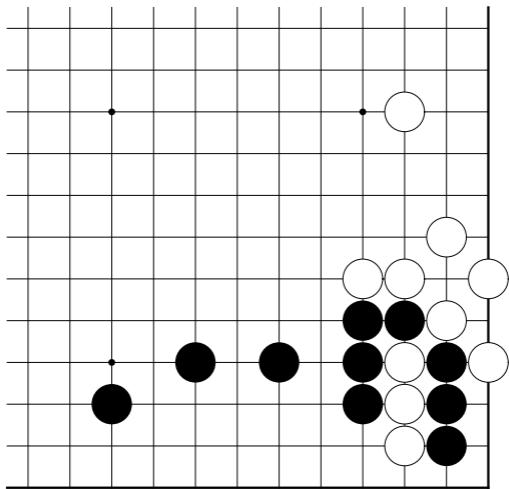
逆先手 3 目

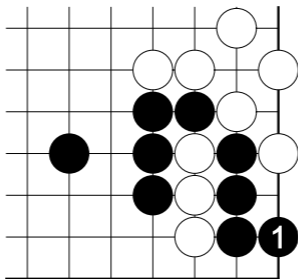




逆先手 3 目

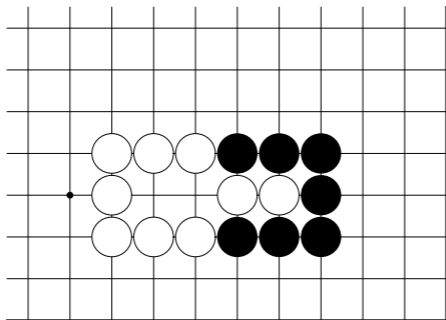
逆先手 3 目

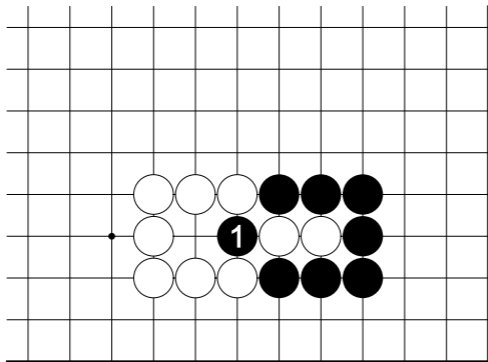




逆先手 3 目

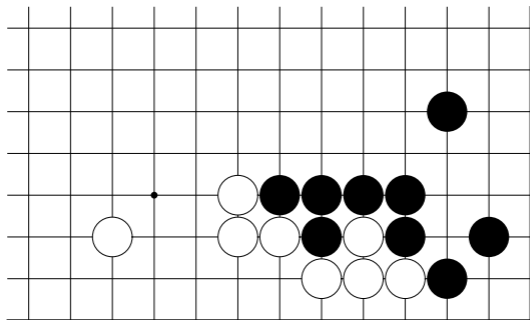
4 目

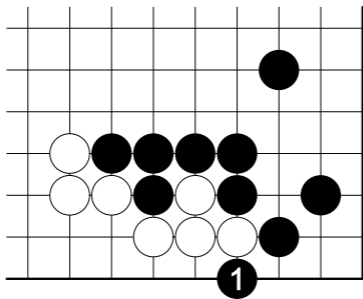




4 目

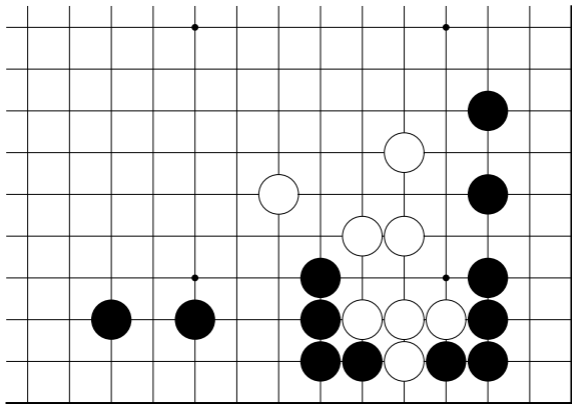
4 目

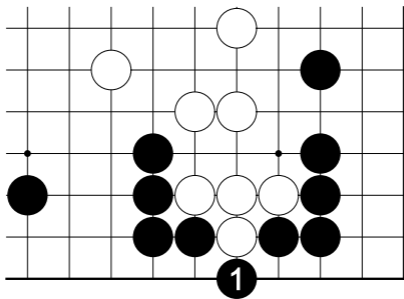




4 目

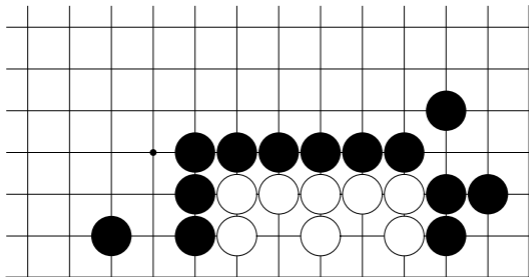
4 目

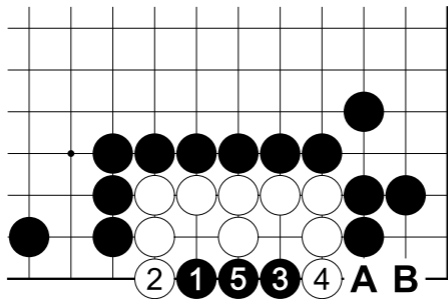




4 目

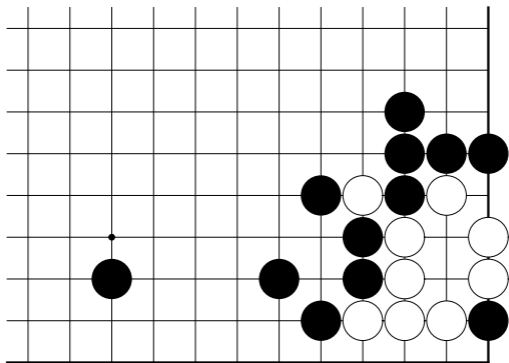
4 目

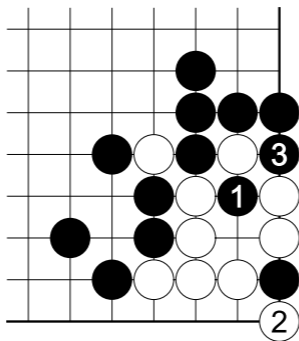




4 目

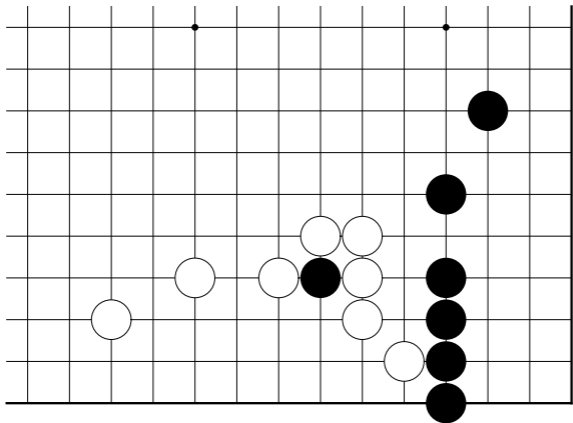
4 目

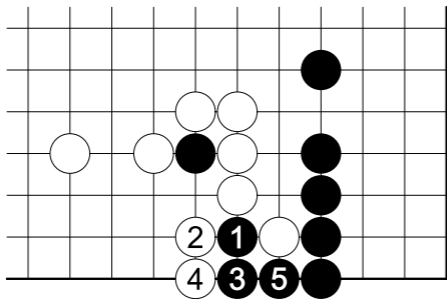




4 目

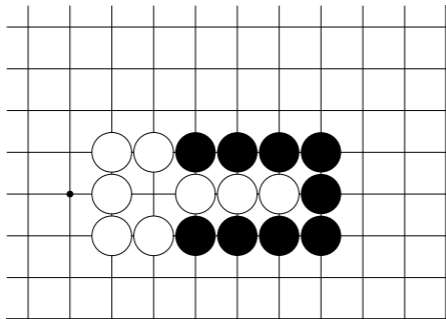
4 目

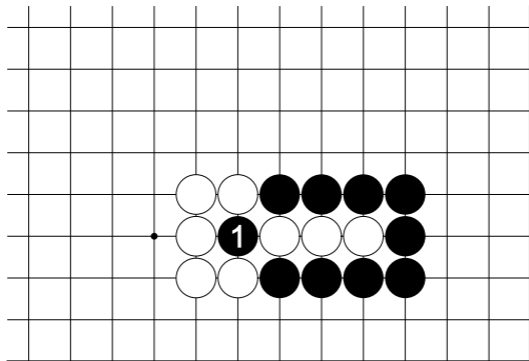




4 目

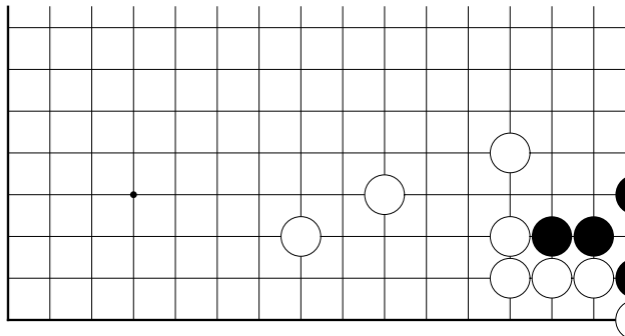
4 目弱

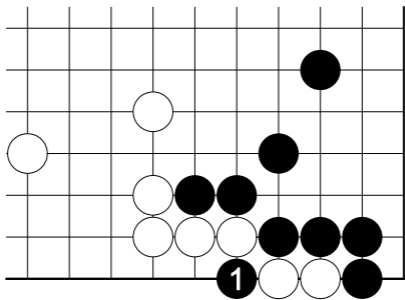




4 目

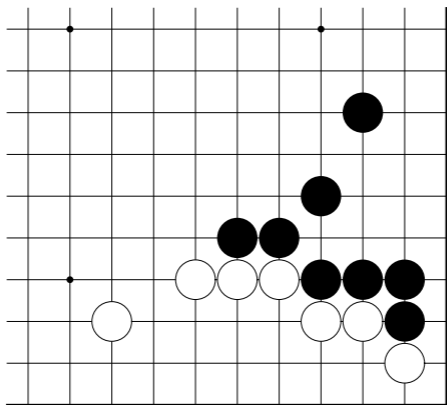
4 目強

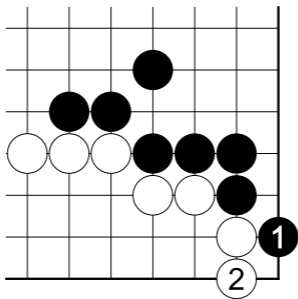




4 目強

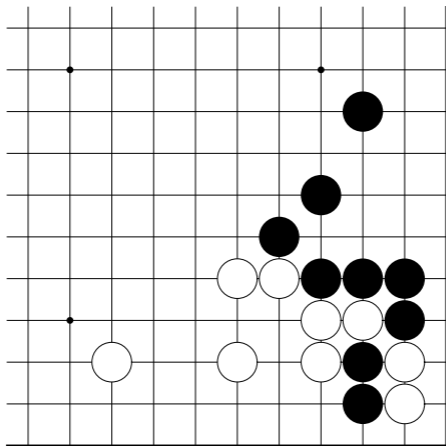
先手 4 目

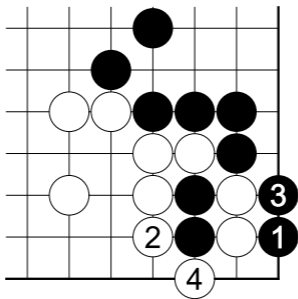




先手 4 目

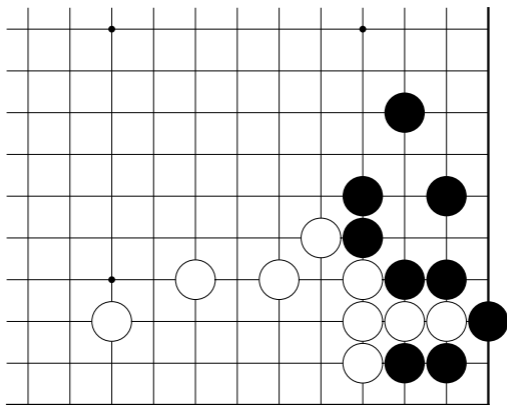
先手 4 目



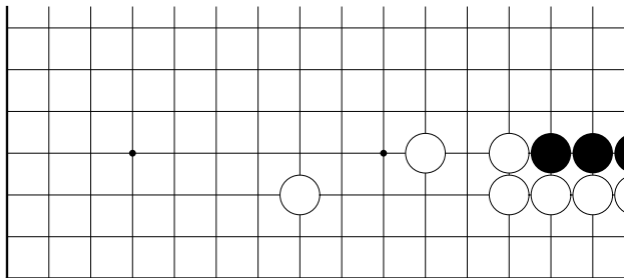


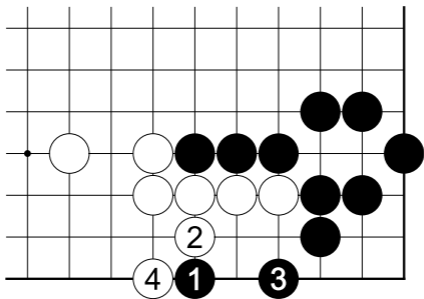
先手 4 目

先手 4 目



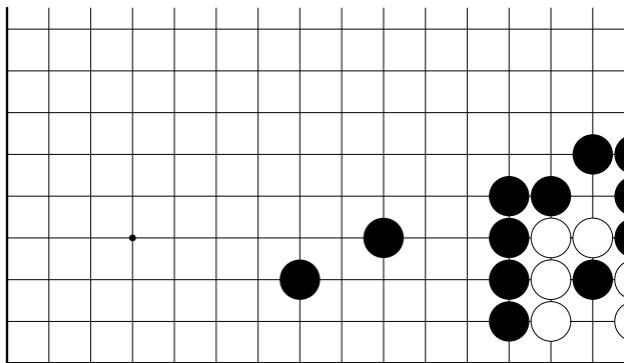
先手 4 目强

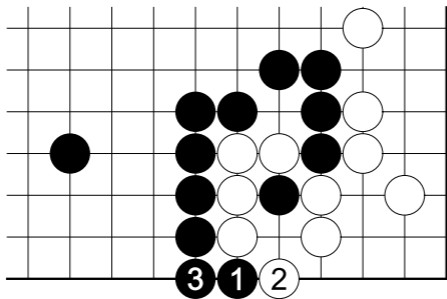




先手 4 目

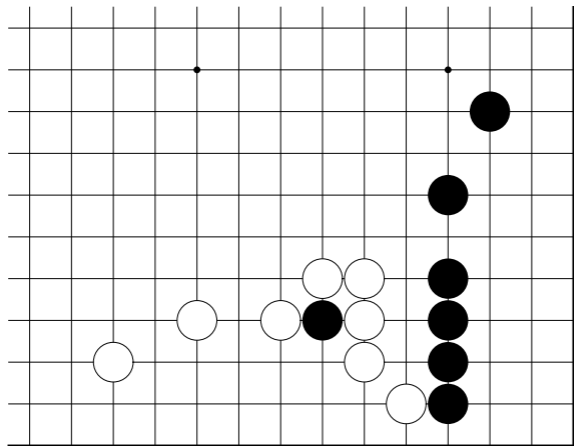
逆先手 4 目

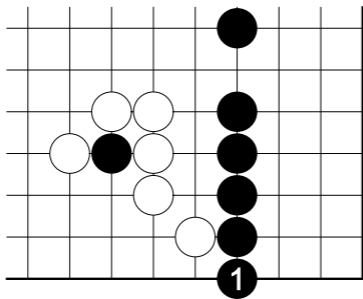




逆先手 4 目

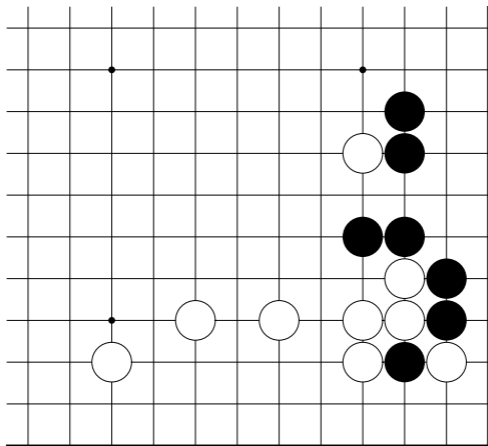
逆先手 4 目

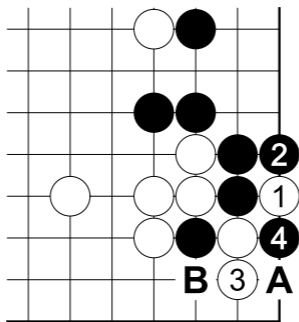




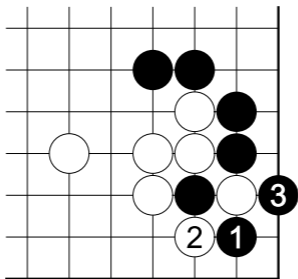
逆先手 4 目

逆先手约 4 目



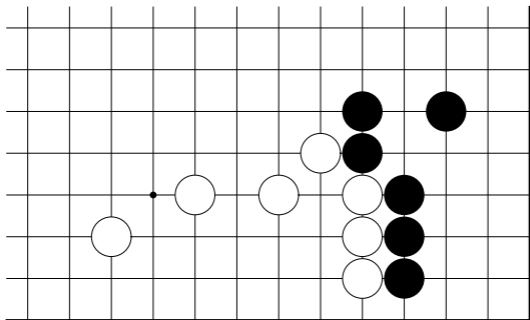


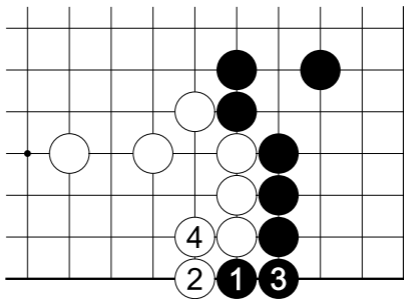
参考图之后黑 A 白 B，约差 4 目。



逆先手约 4 目

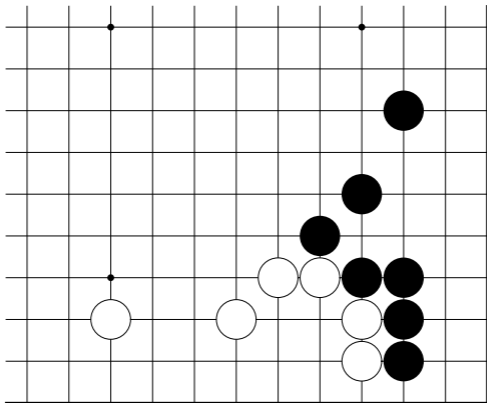
双方先手 4 目

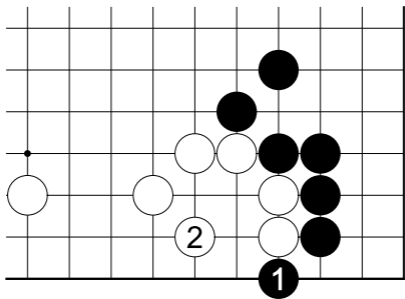




双方先手 4 目

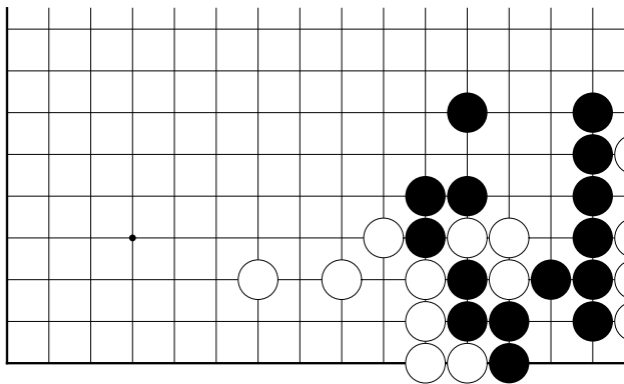
双方先手 4 目

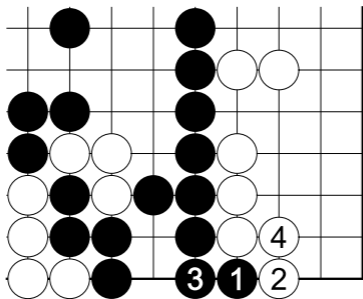




双方先手 4 目

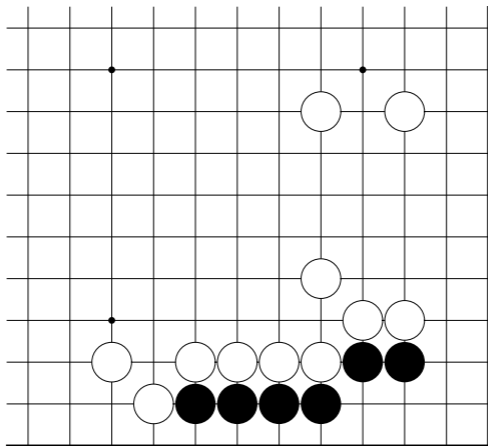
双方先手 4 目

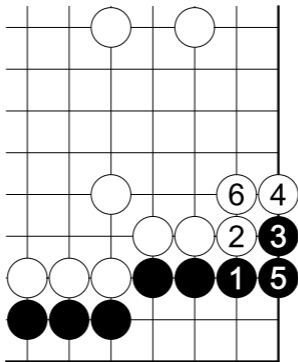




双方先手 4 目

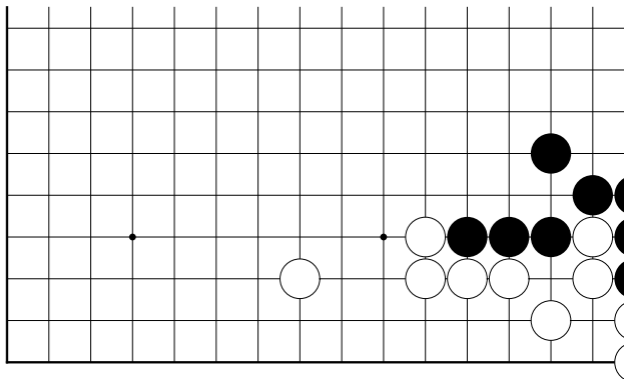
双方先手 4 目

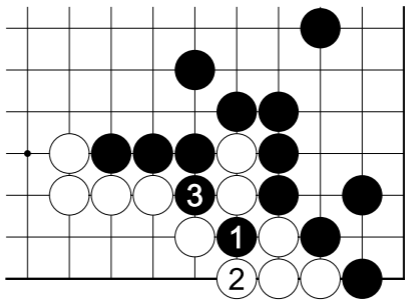




双方先手 4 目

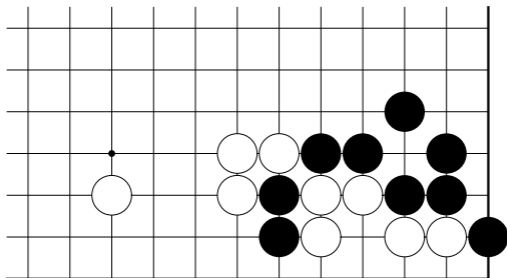
4 目弱

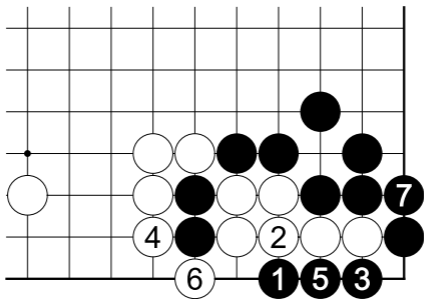




4 目弱

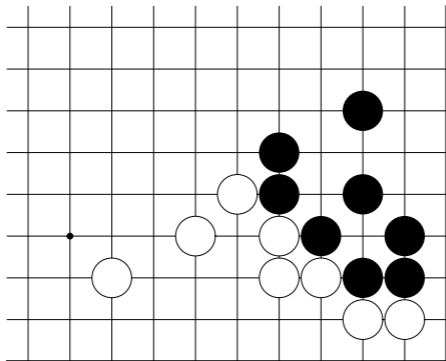
5 目

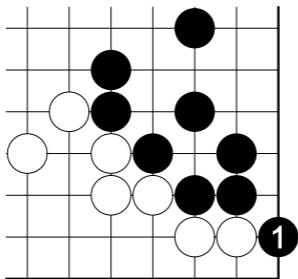




5 目

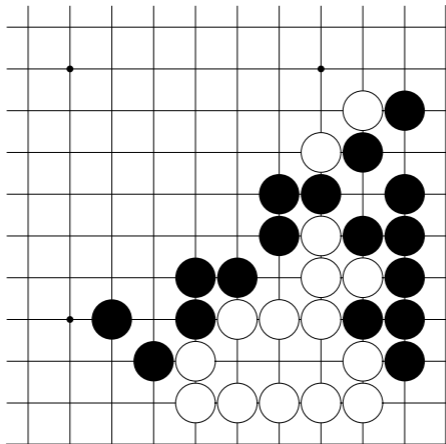
5 目弱

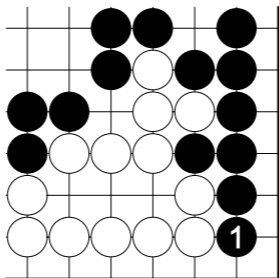




5 目弱

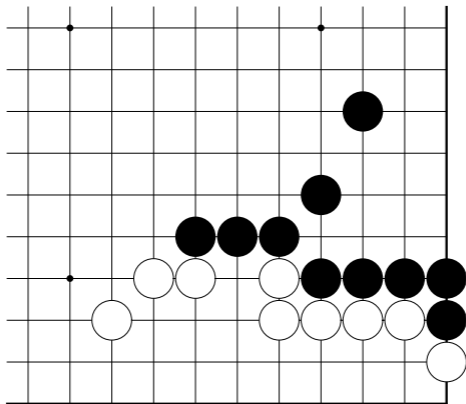
5 目弱

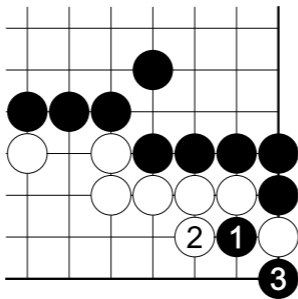




5 目弱

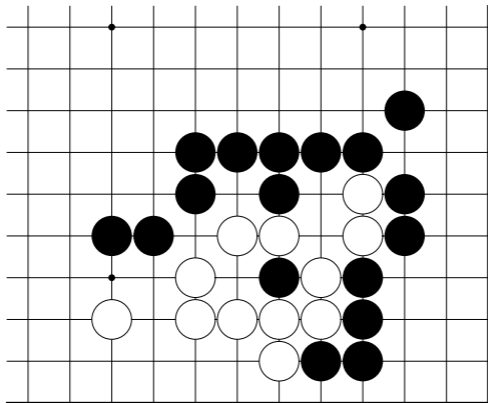
5 目強

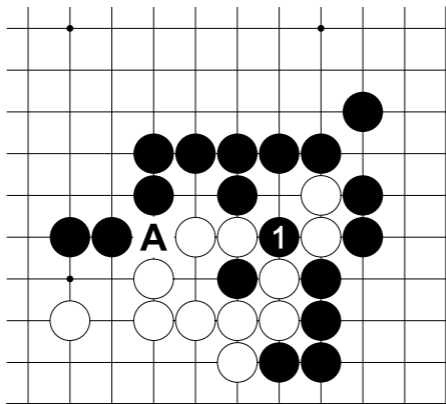




5 目強

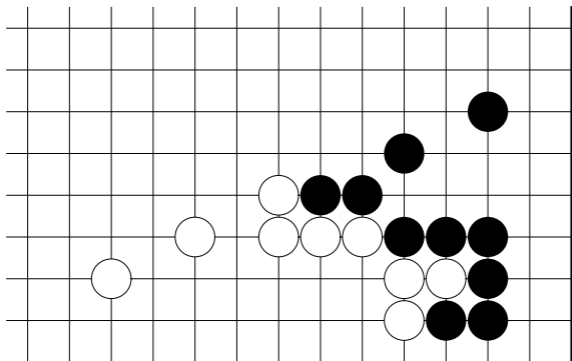
5 目半

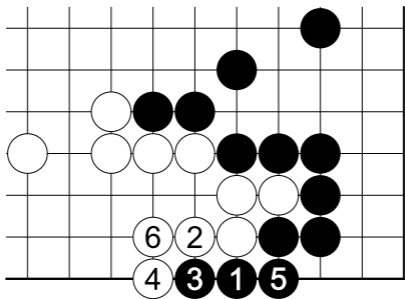




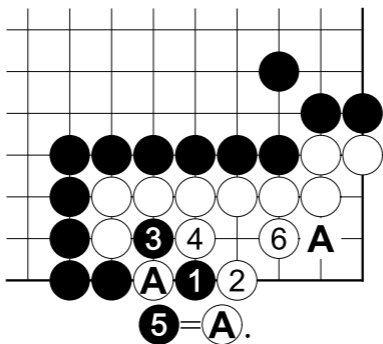
5 目半

先手 5 目



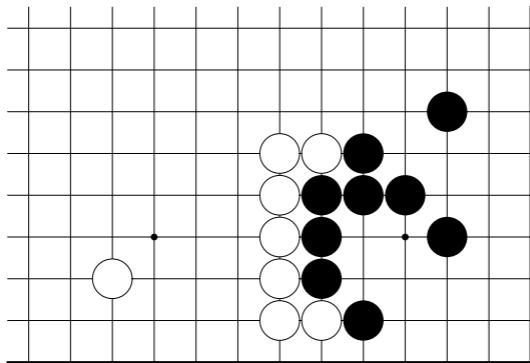


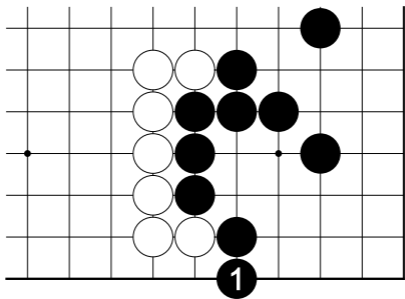
先手 5 目



先手 5 目白 2 若在 3 位粘，白有 A 靠的好手。

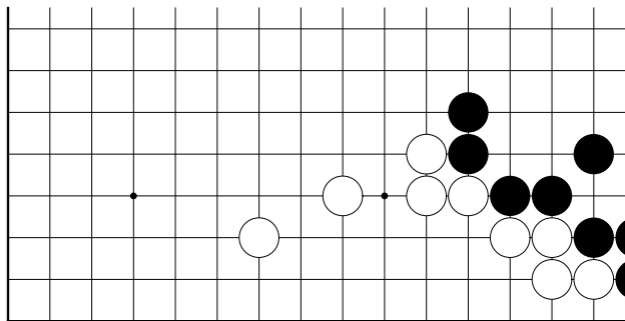
逆先手 5 目

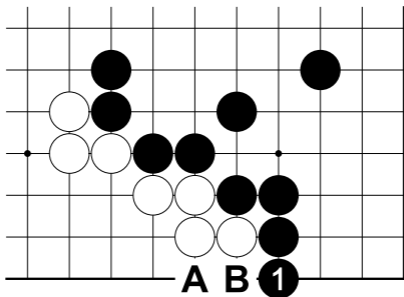




逆先手 5 目

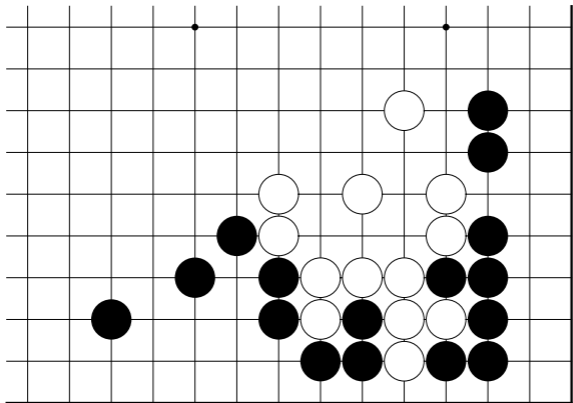
逆先手 5 目

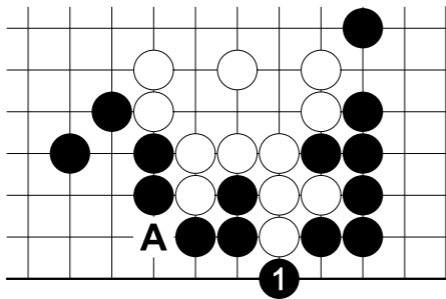




逆先手 5 目好手，以后有 A 的手段，若 B 扳则丧失了后续手段。

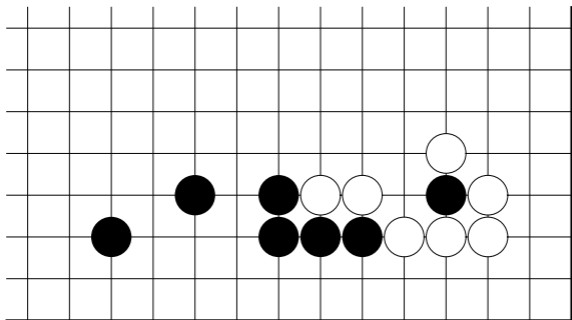
逆先手 5 目

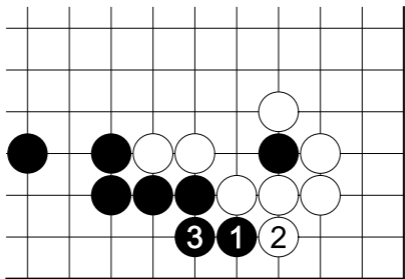




逆先手 5 目 A 位如有黑子，则是后手 4 目。

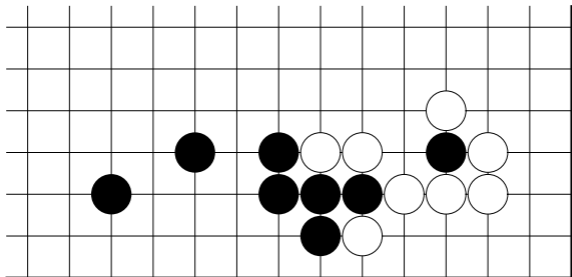
6 目

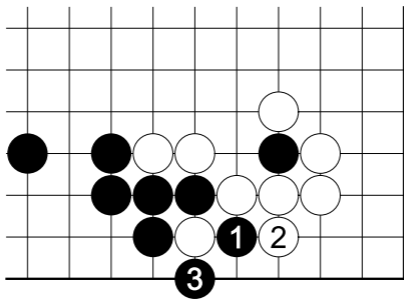




6 目

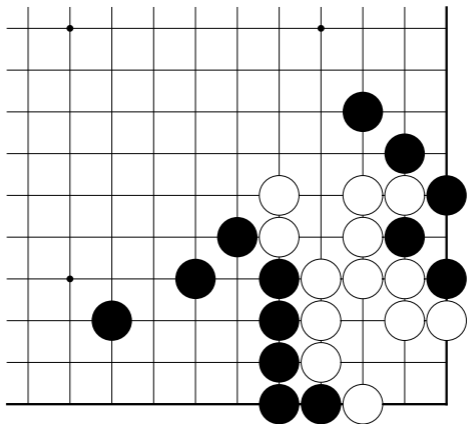
6 目

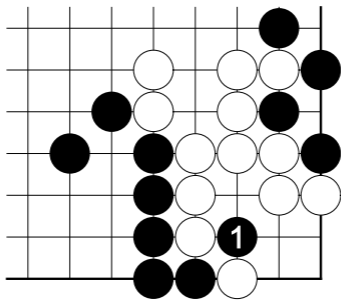




6 目

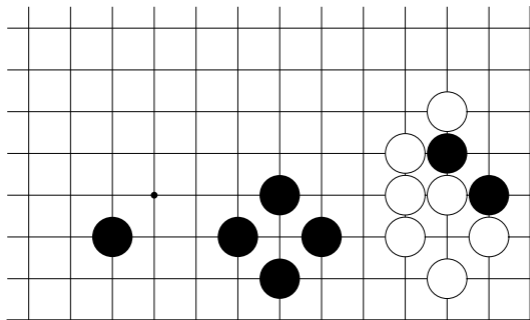
6 目

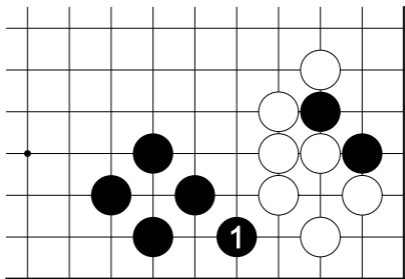




6 目

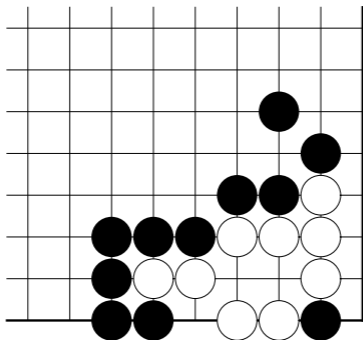
6 目

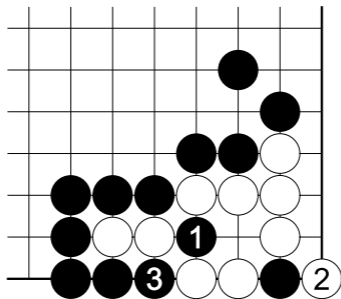




6 目

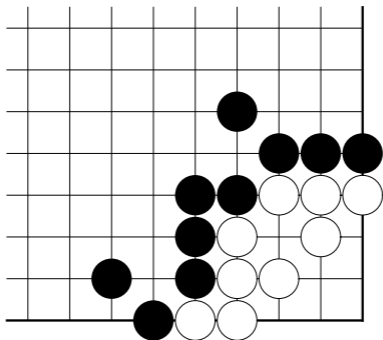
6 目

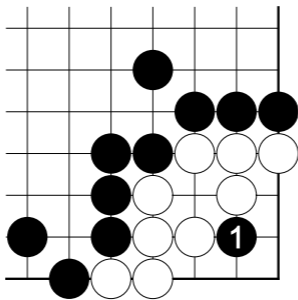




6 目

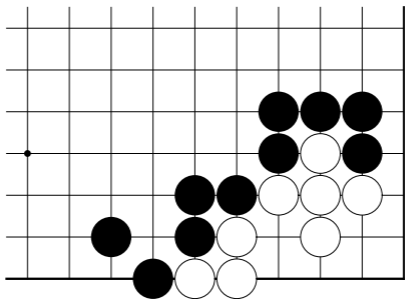
6 目

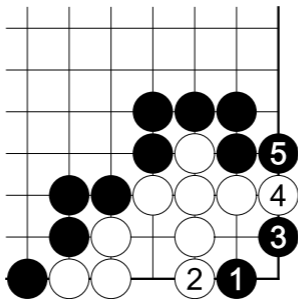




6 目日本规则，中国规则为 4 目。

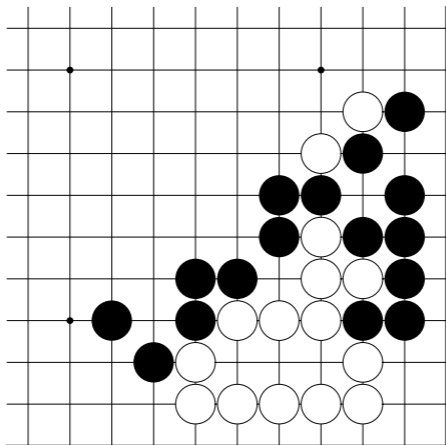
6 目

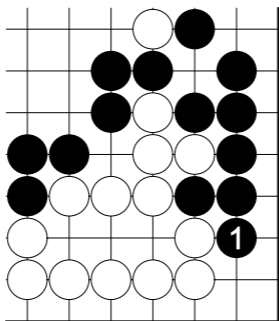




6 目中国规则 5 目。

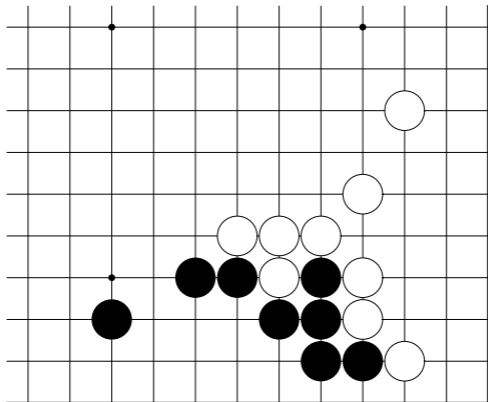
6 目

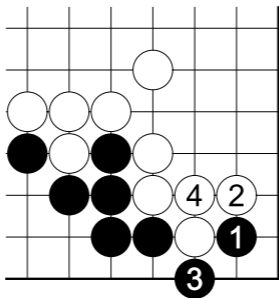




6 目

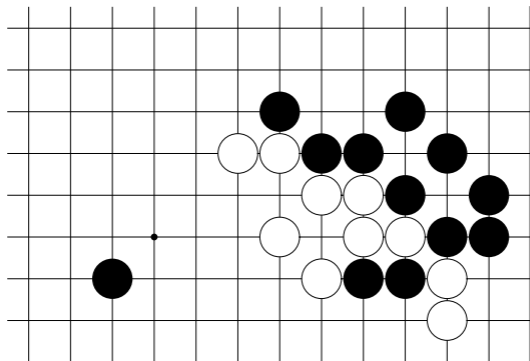
先手 6 目

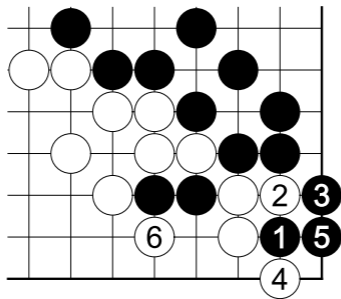




先手 6 目

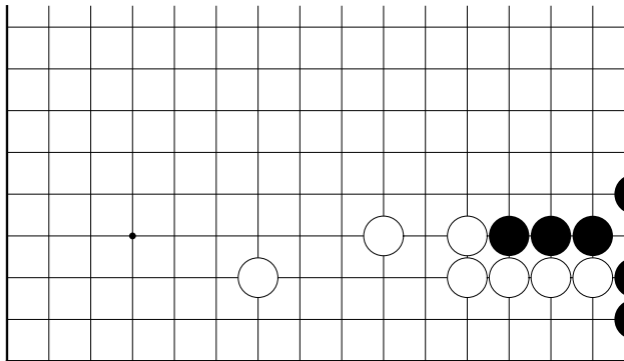
先手 6 目

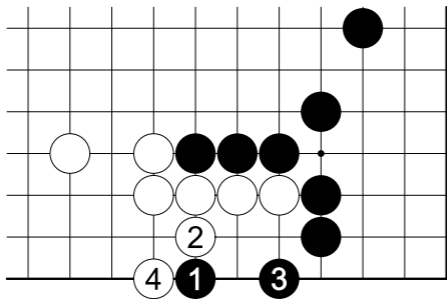




先手 6 目

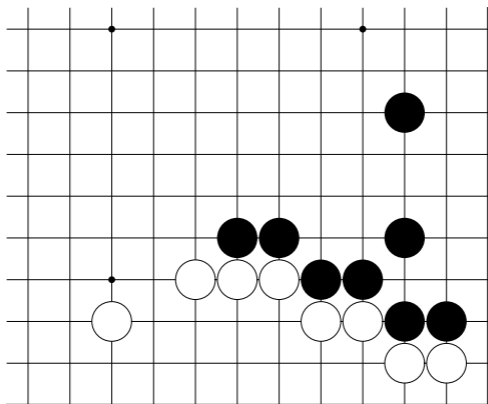
先手 6 目强

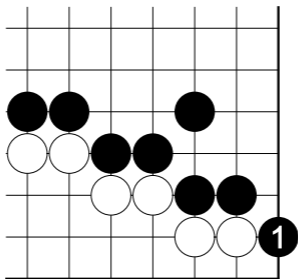




先手 6 目强

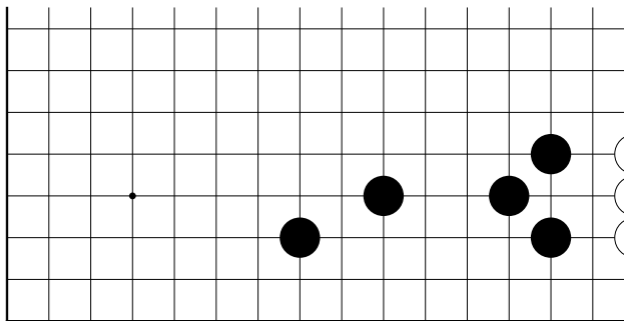
逆先手 6 目弱

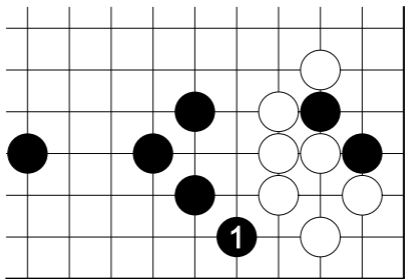




逆先手 6 目弱

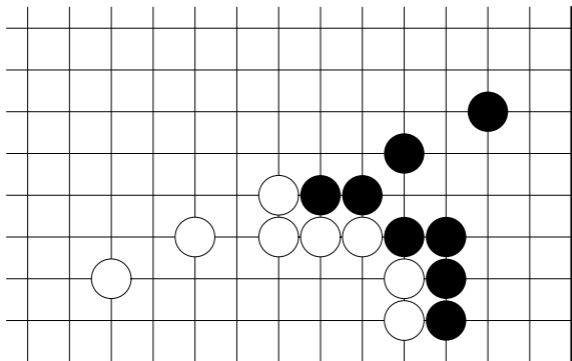
逆先手 6 目

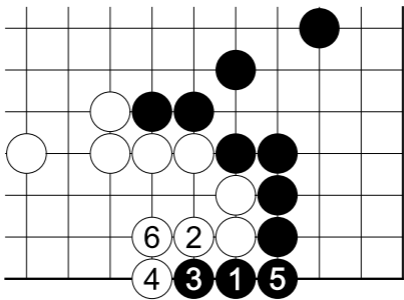




逆先手 6 目

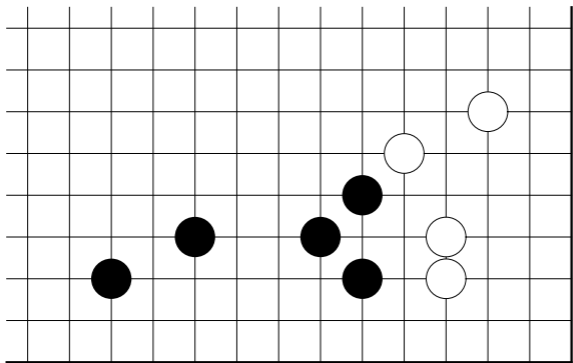
双方先手 6 目

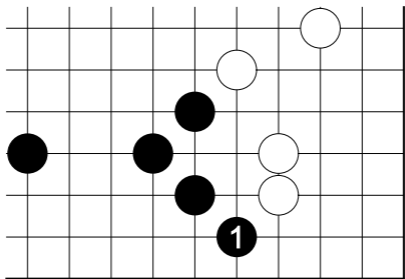




双方先手 6 目

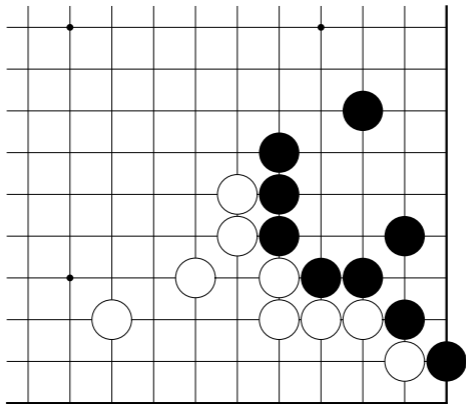
双方先手 6 目

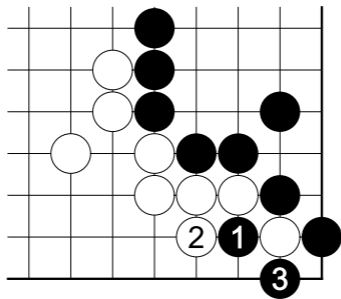




双方先手 6 目

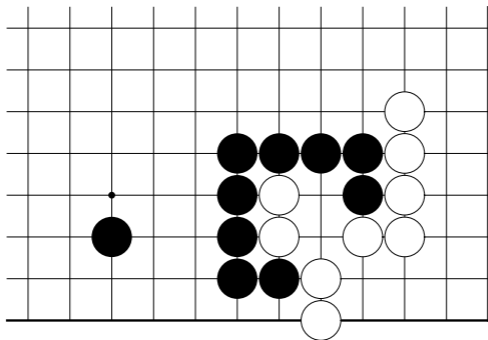
7 目

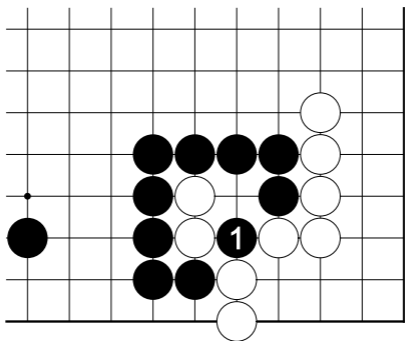




7 目

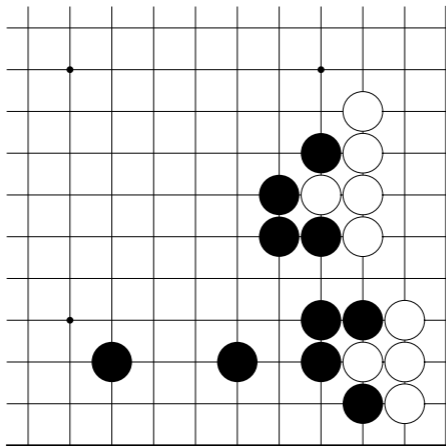
7 目

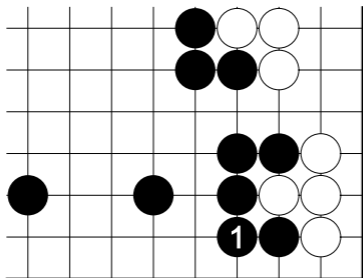




7 目

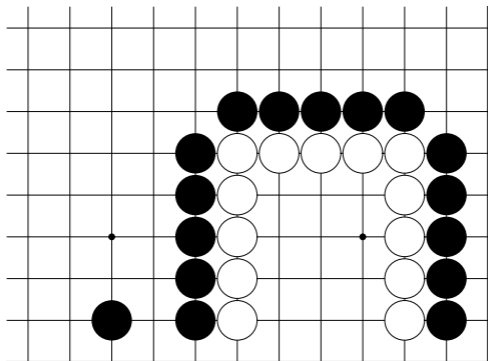
约 7 目

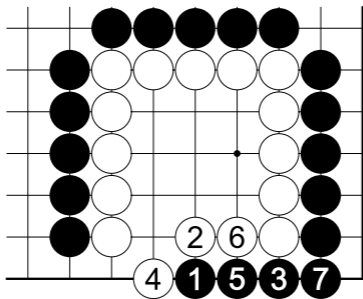




约 7 目

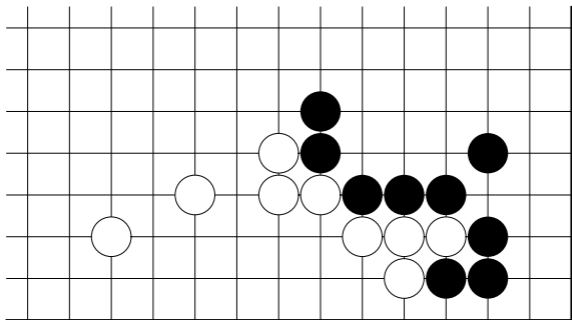
约 7 目

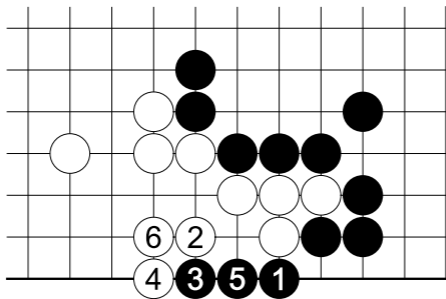




约 7 目

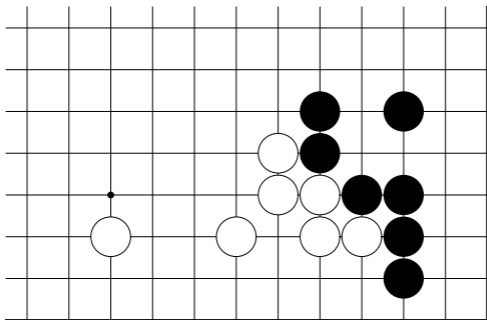
先手 7 目

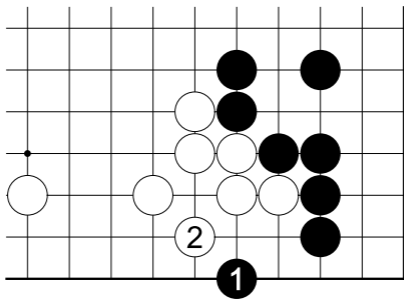




先手 7 目

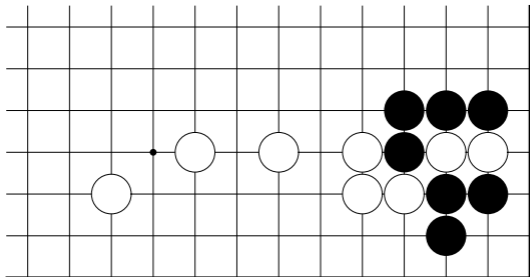
先手 7 目



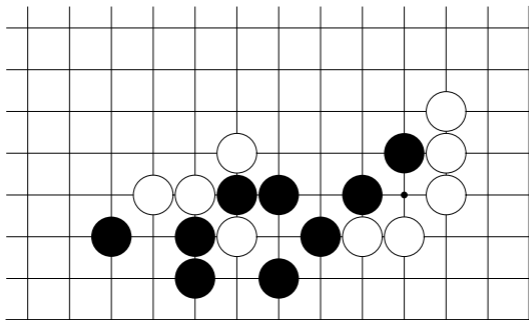


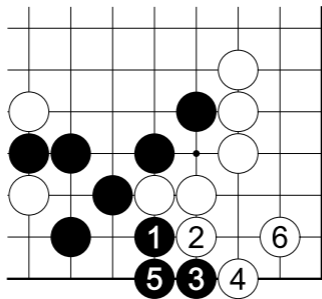
先手 7 目

先手 7 目



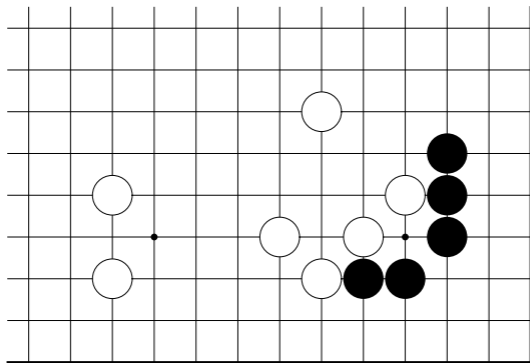
先手 7 目

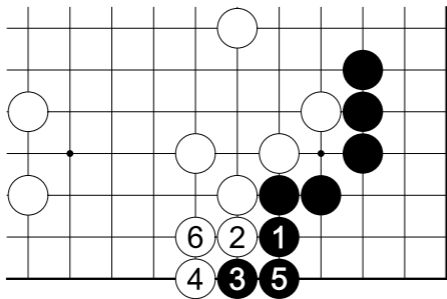




先手 7 目

先手 7 目

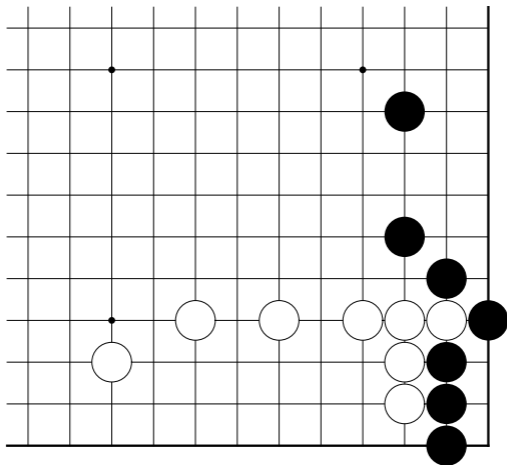


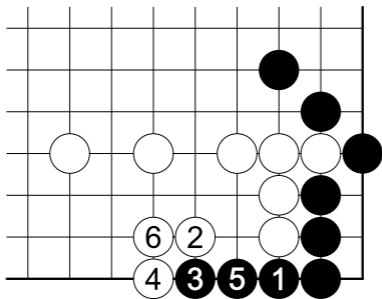


先手 7 目

2 位扳接后手 10 目。

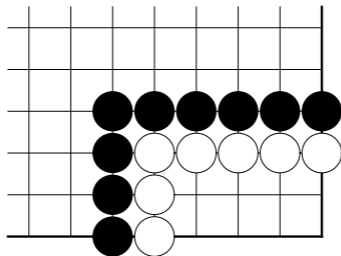
先手 7 目

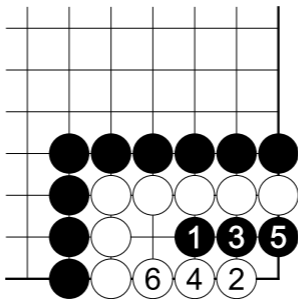




先手 7 目

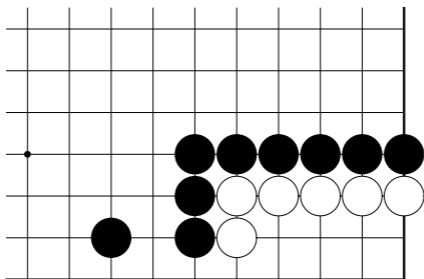
先手 7 目

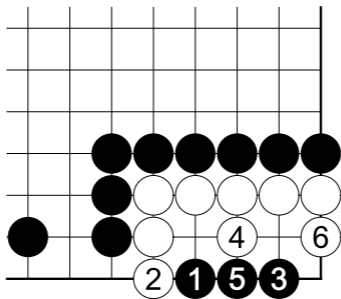




先手 7 目

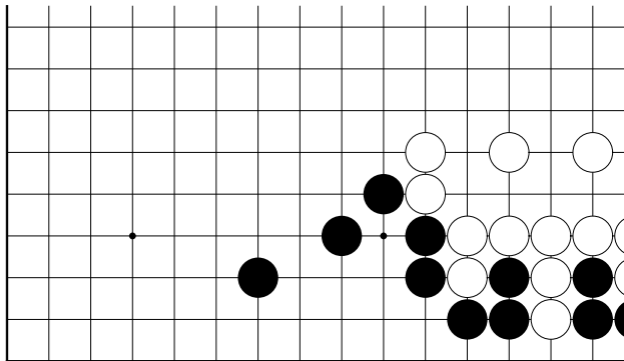
先手 7 目

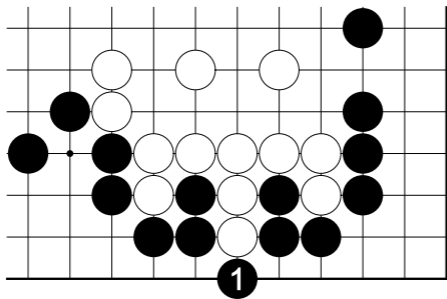




先手 7 目

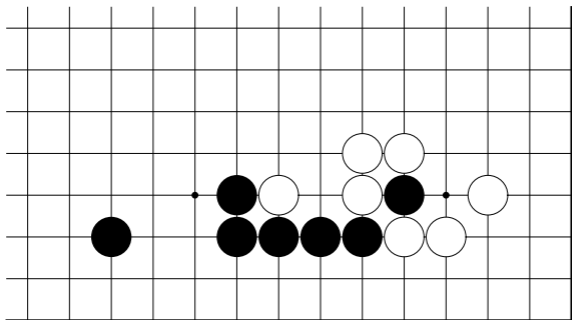
逆先手 7 目

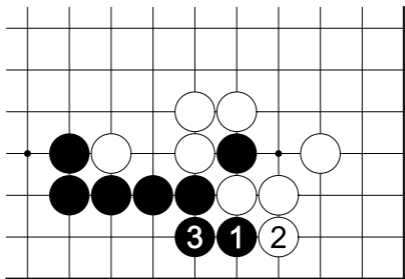




逆先手 7 目

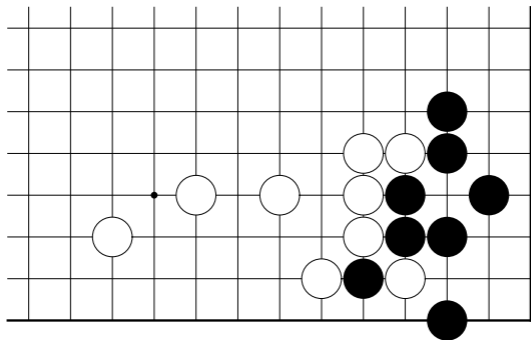
8 目

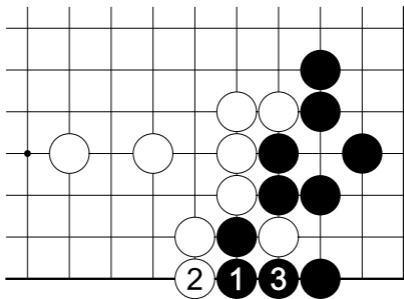




8 目

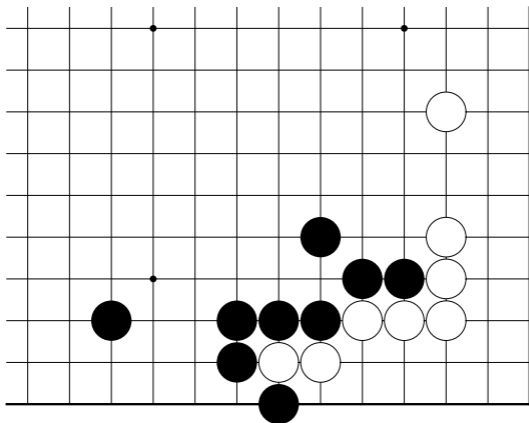
8 目

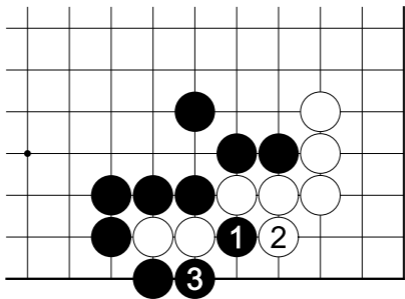




8 目

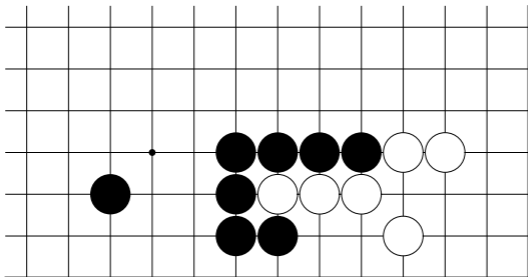
8 目

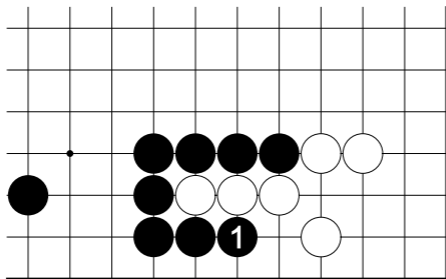




8 目

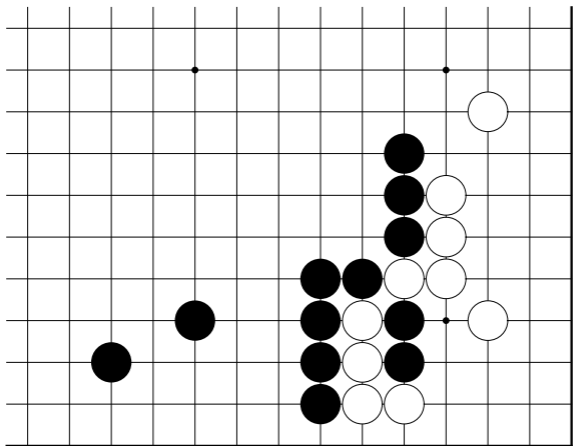
8 目

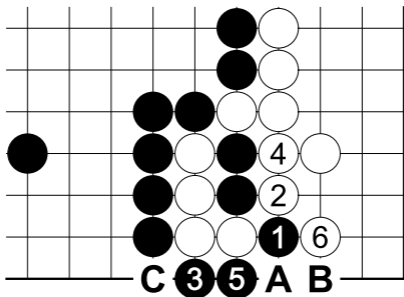




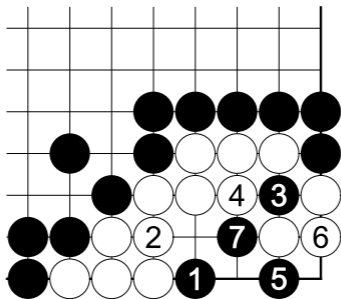
8 目

8 目



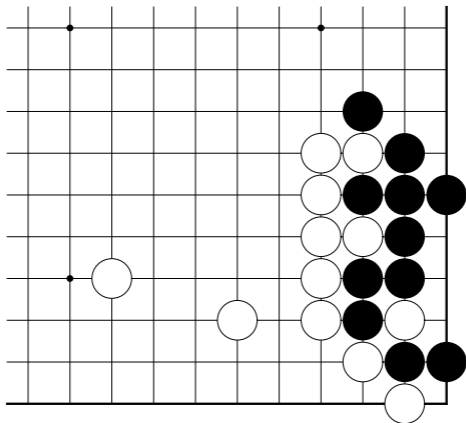


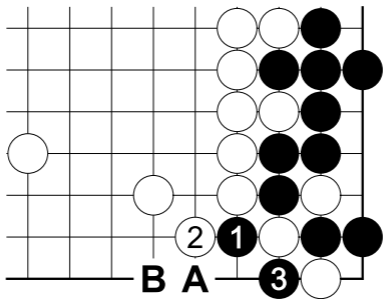
8 目白 6 后如黑 a 白 b 黑 c 的话，是 8 目。即使放置不走，白 a 黑 b，也为先手 5 目。



8 目

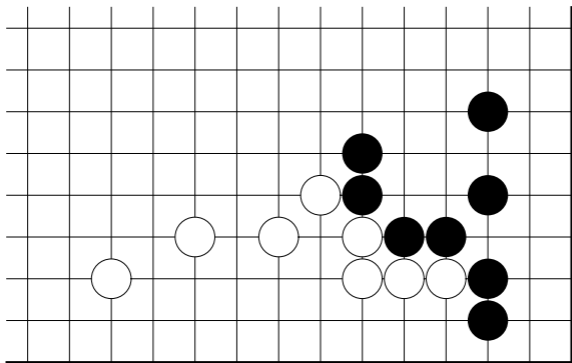
8 目強

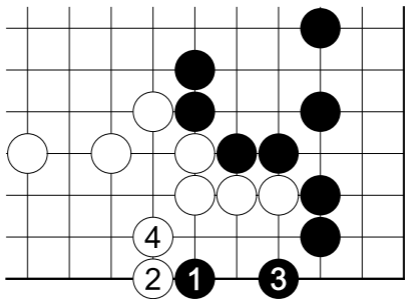




8 目強

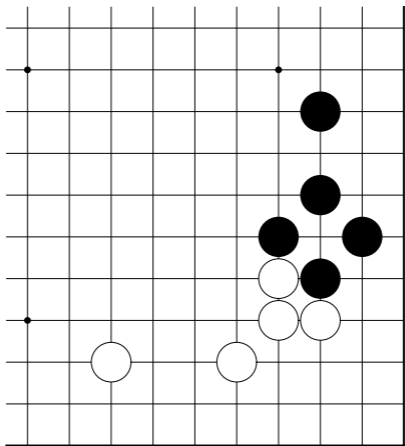
先手 8 目

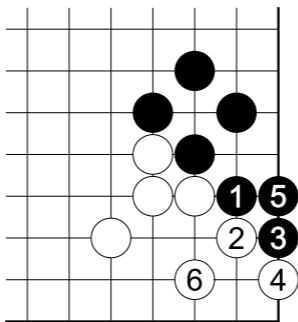




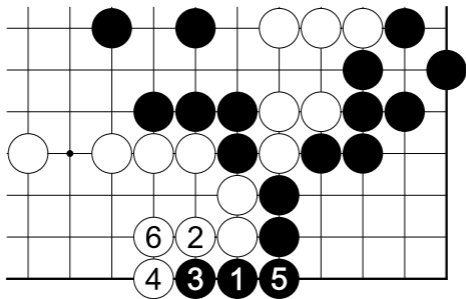
先手 8 目

先手约 8 目



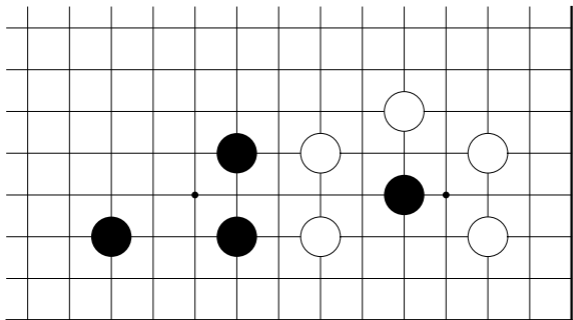


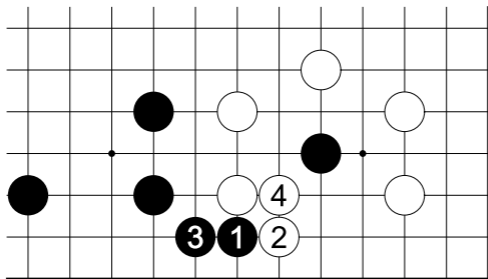
先手约 8 目



双方先手 8 目

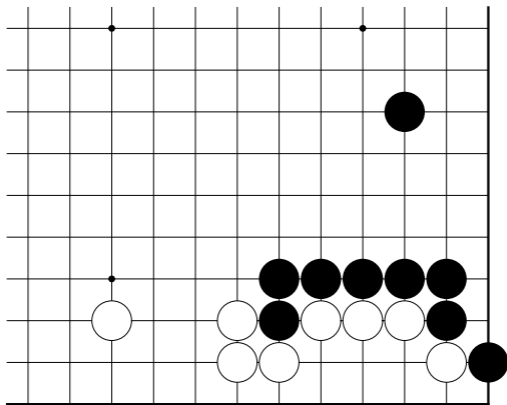
先手约 8 目

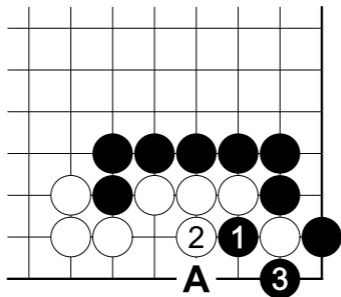




先手约 8 目 3 位尖小。

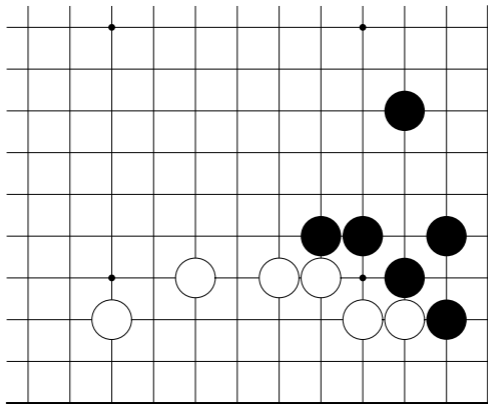
9 目

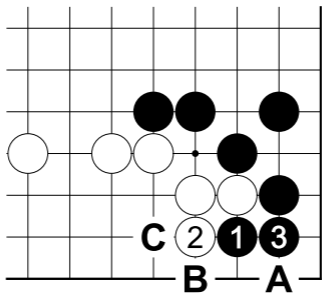




9 目如无 A 位打，只有 7 目。

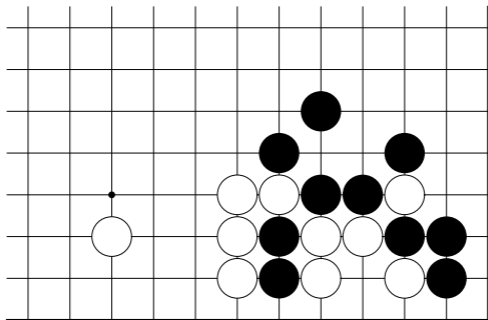
9 目

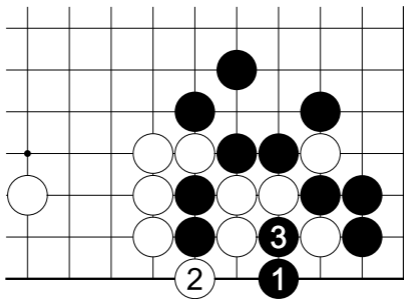




9 目黑 3 如 a 虎，以后黑 b 白 c 的话，则价值增至 11 目，但必须因劫材情况而定。

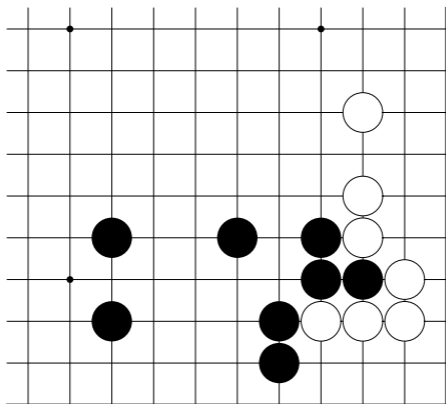
约 9 目

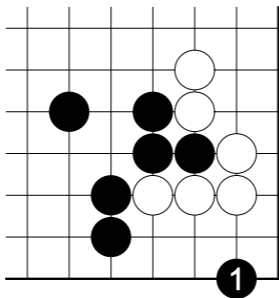




约 9 目

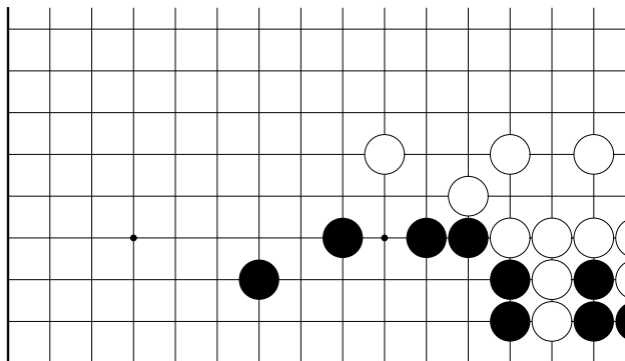
约 9 目

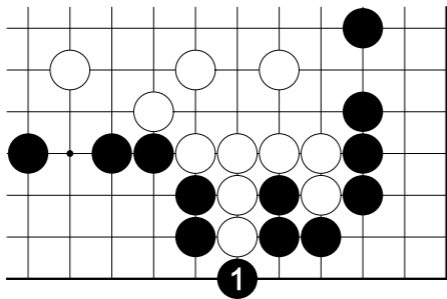




约 9 目

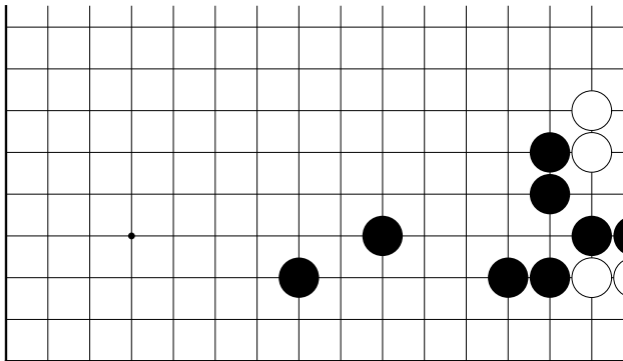
逆先手 9 目

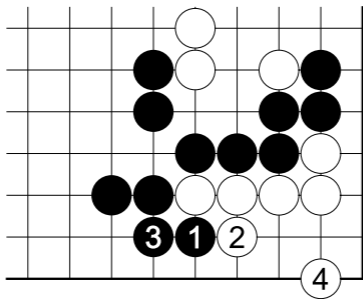




逆先手 9 目

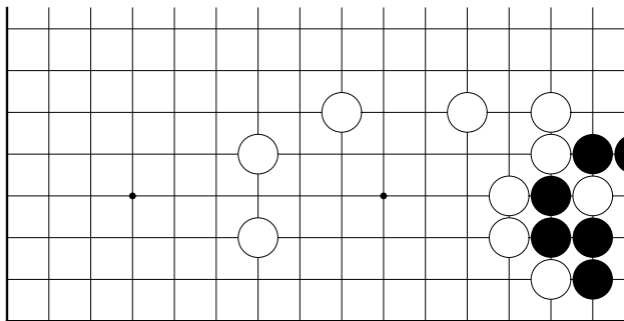
先手 9 目

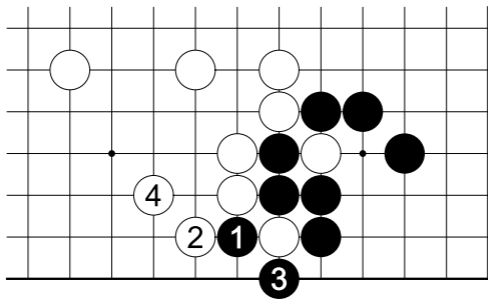




先手 9 目

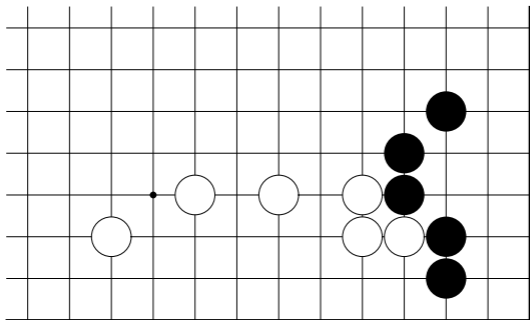
先手 9 目

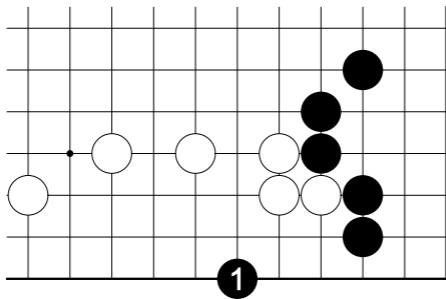




先手 9 目

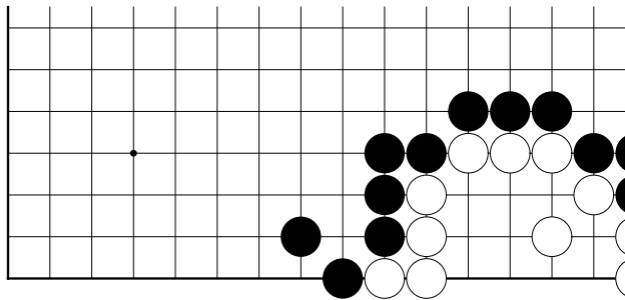
先手 9 目



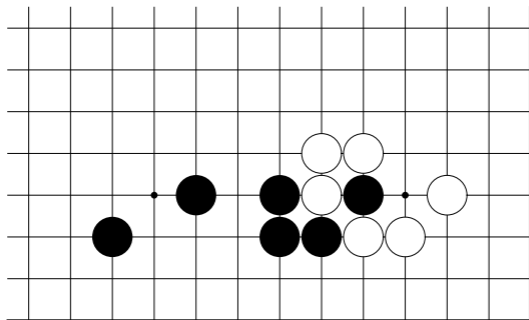


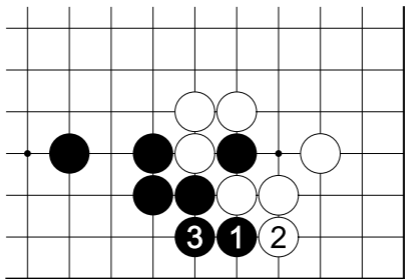
先手 9 目

先手 9 目



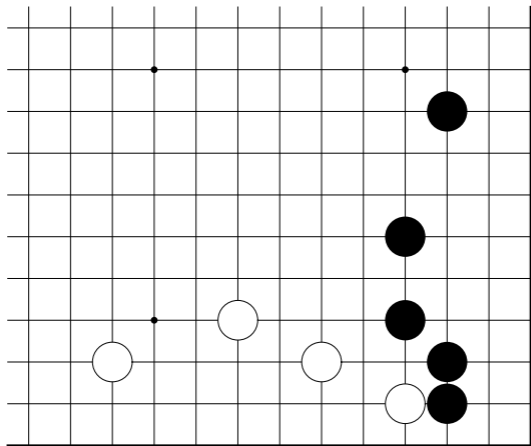
10 目

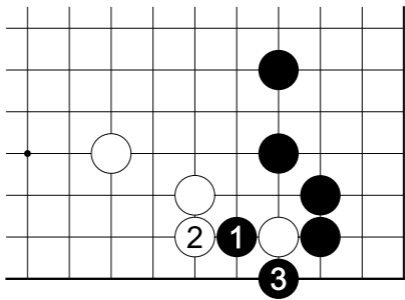




10 目

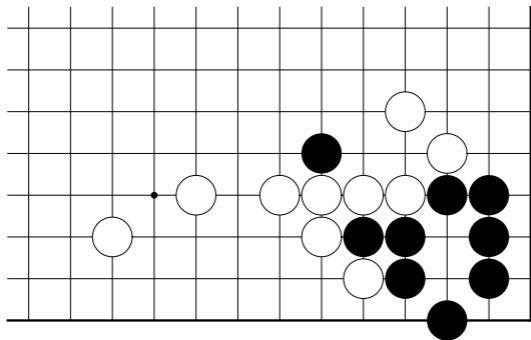
约 10 目



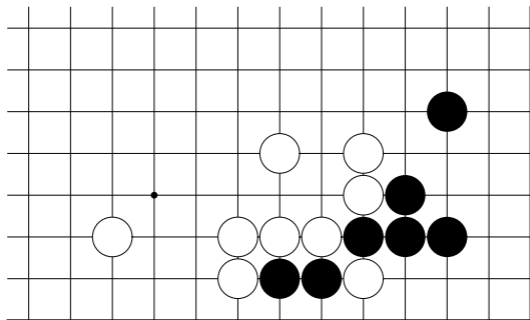


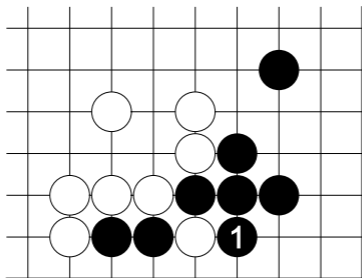
约 10 目

10 目



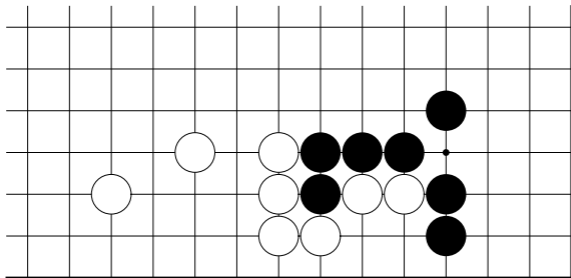
10 目

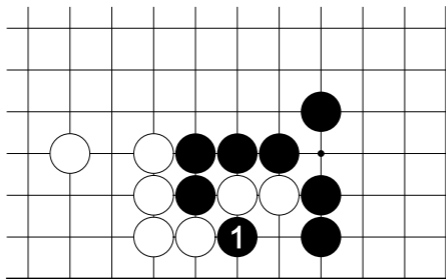




10 目

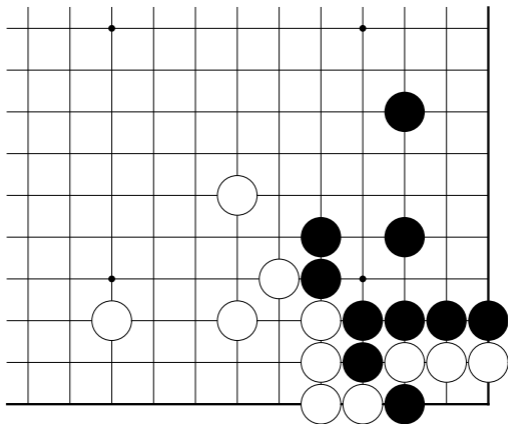
10 目

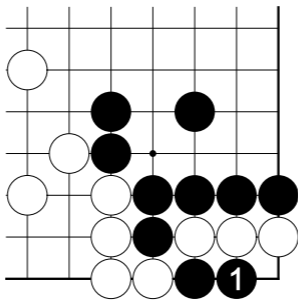




10 目

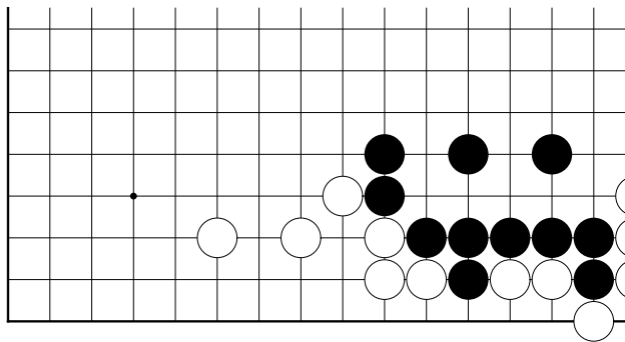
10 目

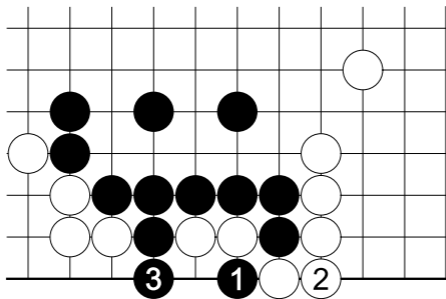




10 目

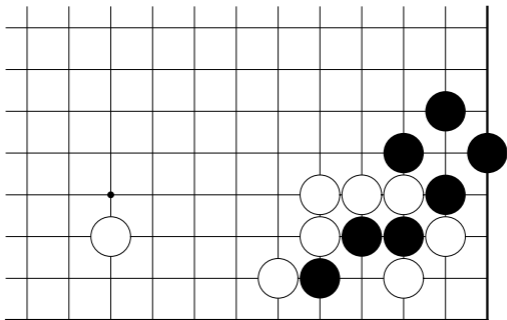
10 目

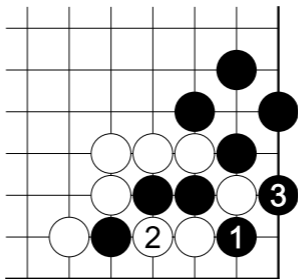




10 目

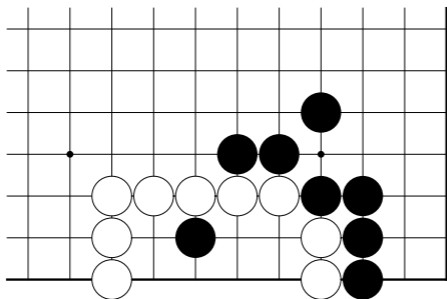
约 10 目

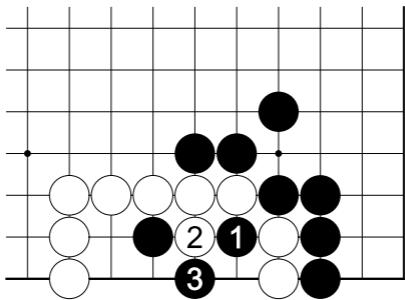




约 10 目

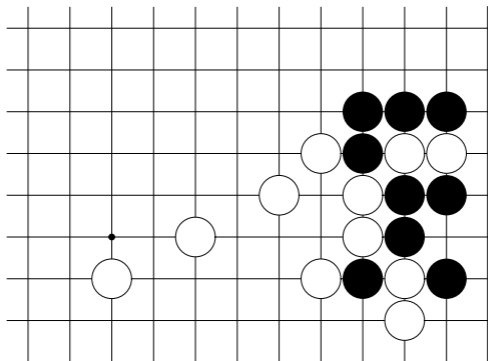
10 目半



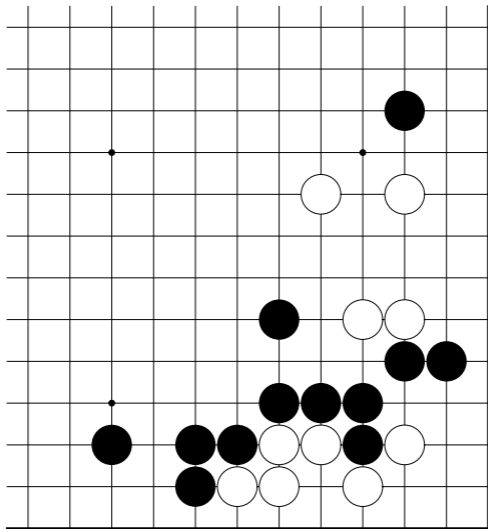


10 目半

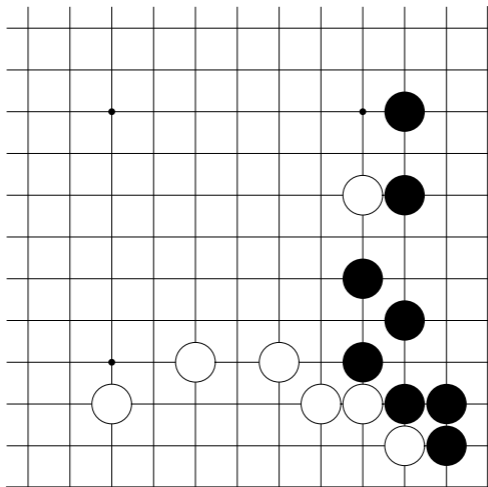
先手约 10 目

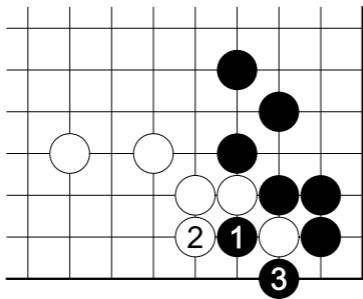


先手约 10 目



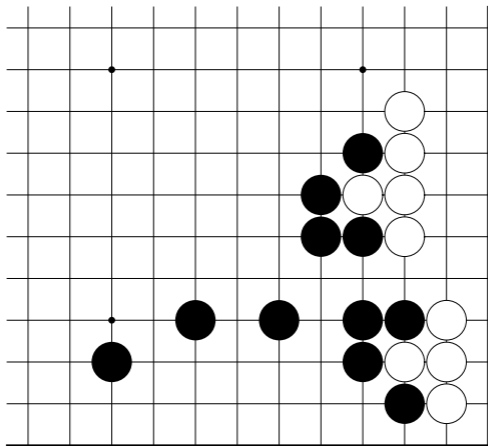
约 11 目

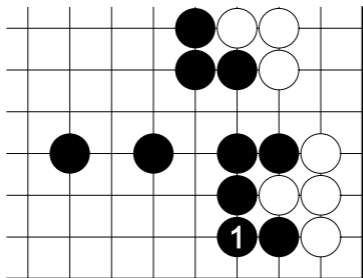




约 11 目

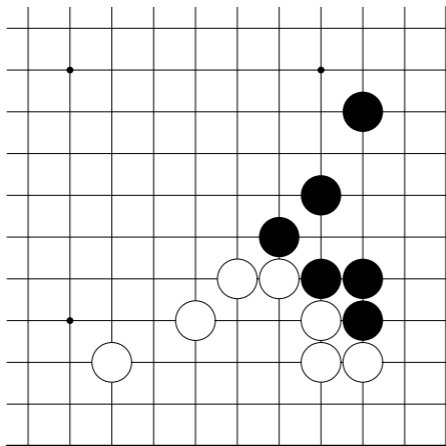
约 11 目

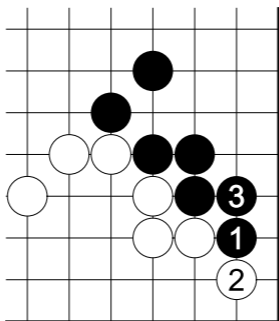




约 11 目

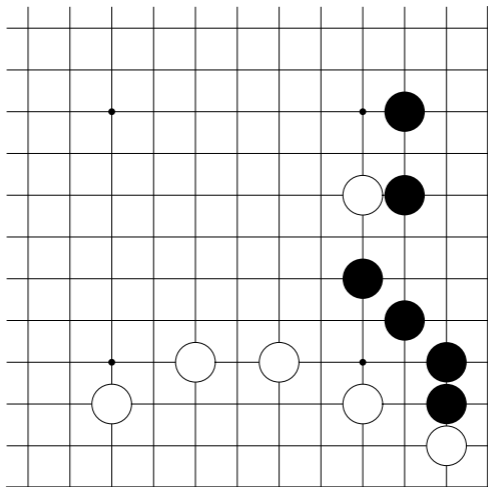
11 目

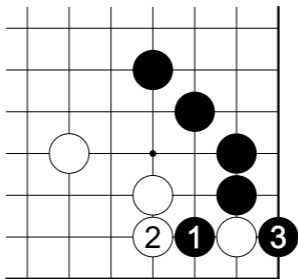




11 目

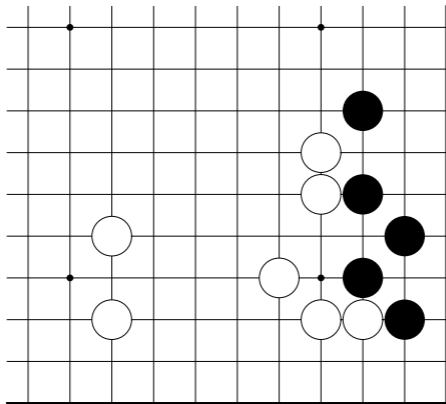
约 11 目

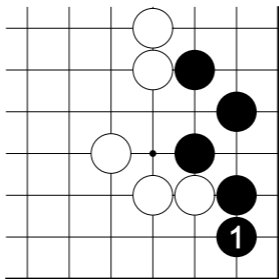




约 11 目

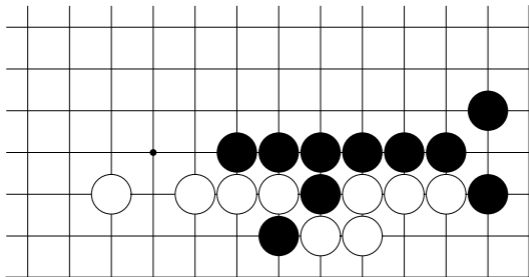
11 目

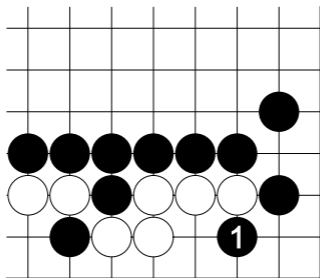




11 目

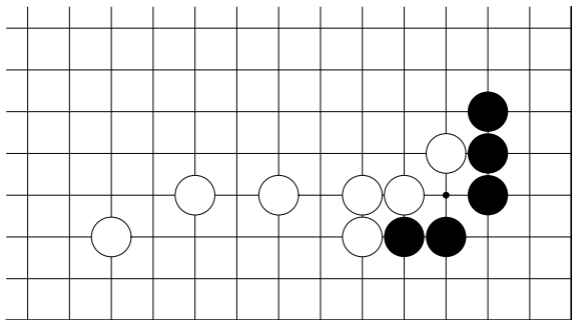
11 目

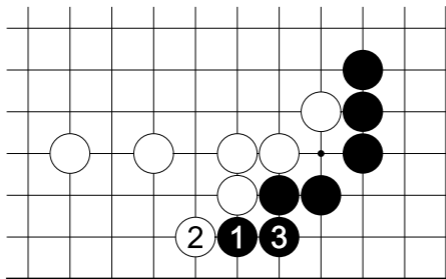




11 目

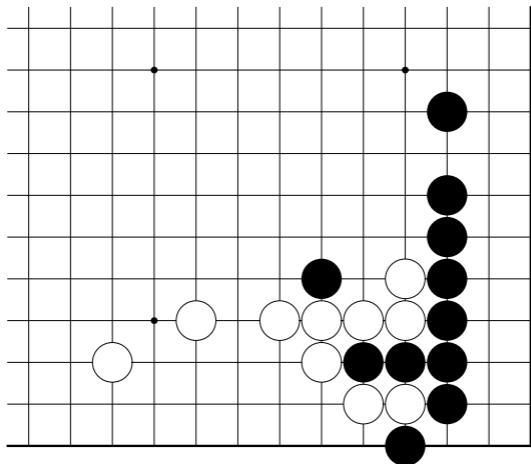
12 目

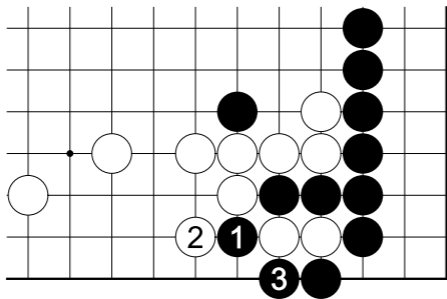




12 目

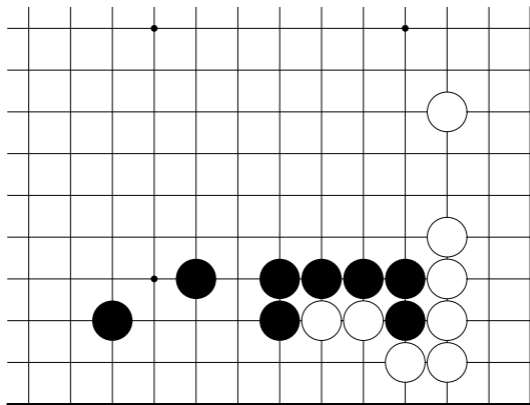
12 目

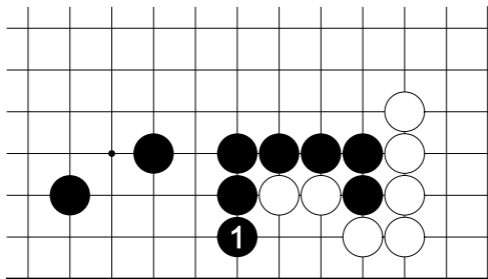




12 目

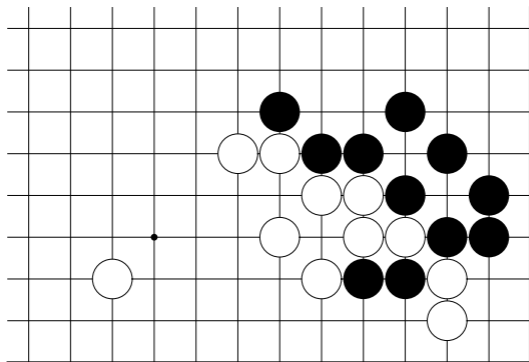
12 目

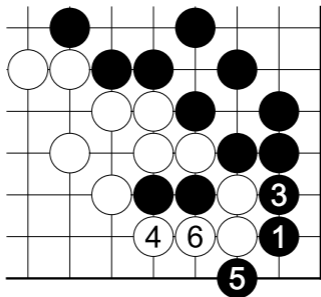




12 目

12 目

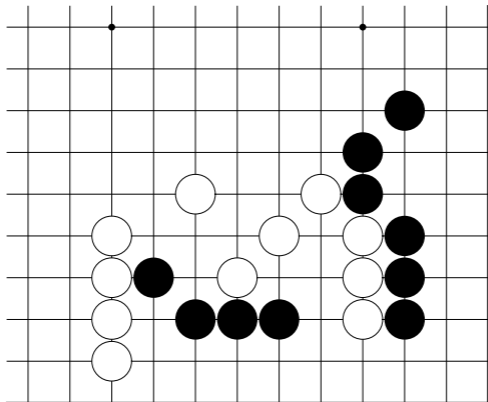


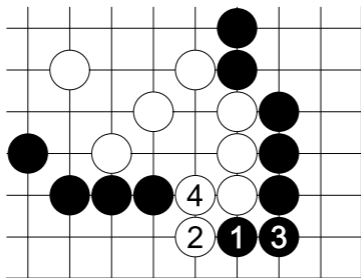


② pass.

12 目对黑 1，白脱先，后手 12 目。白如 3 位冲，则为先手 6 目（参考 91 图）。

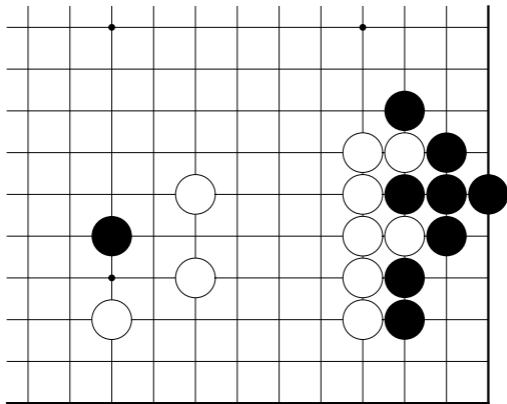
先手 12 目

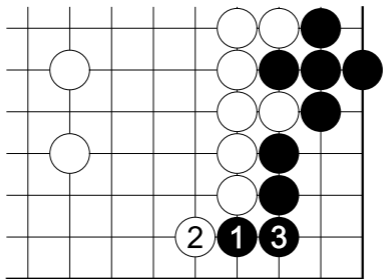




先手 12 目

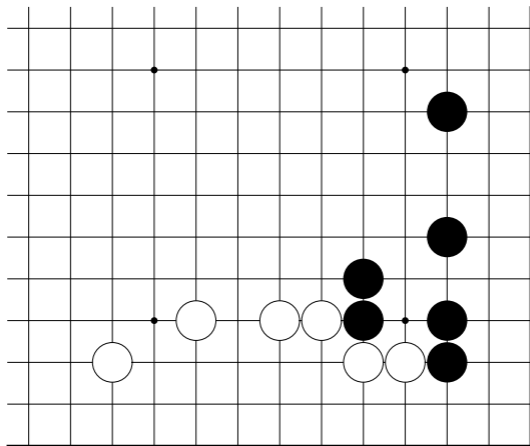
13 目

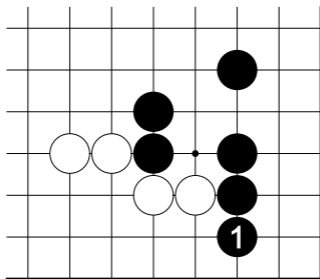




13 目

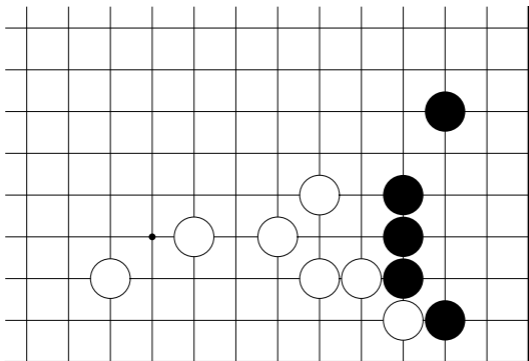
13 目



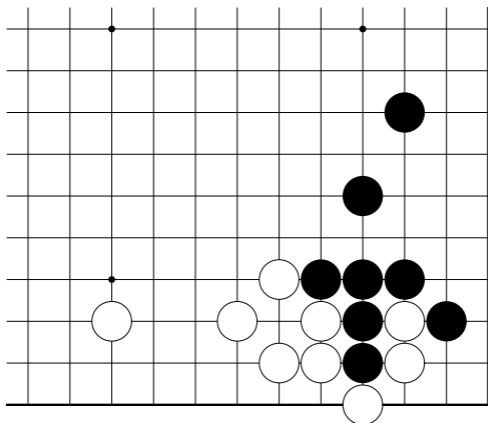


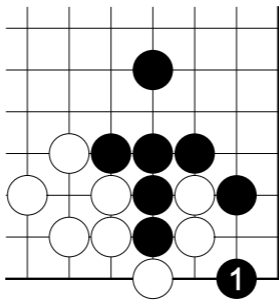
13 目

约 13 目



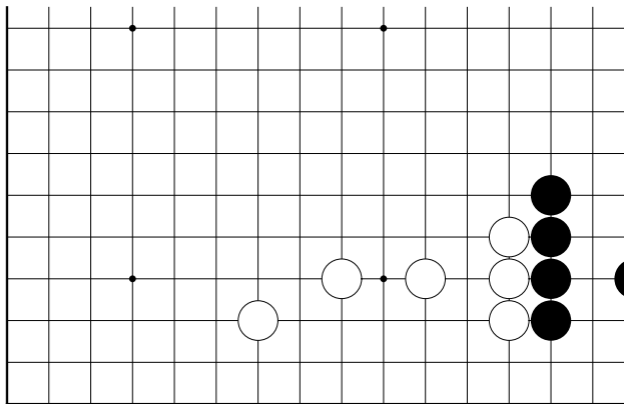
约 13 目

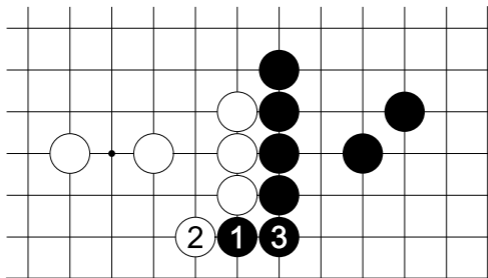




约 13 目

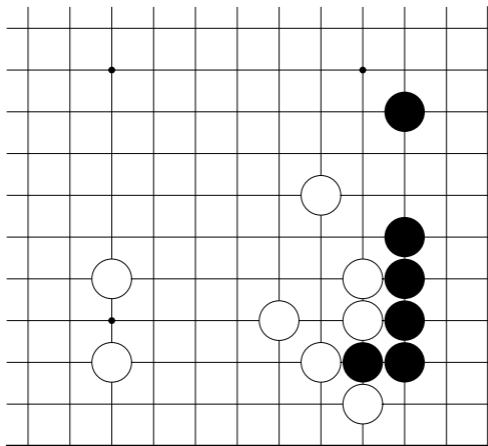
14 目

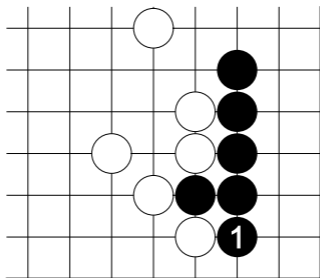




14 目最大的二路扳粘。

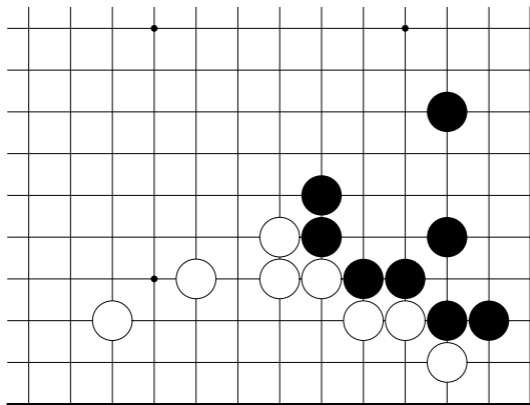
14 目

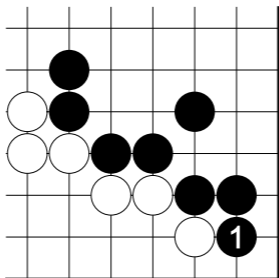




14 目

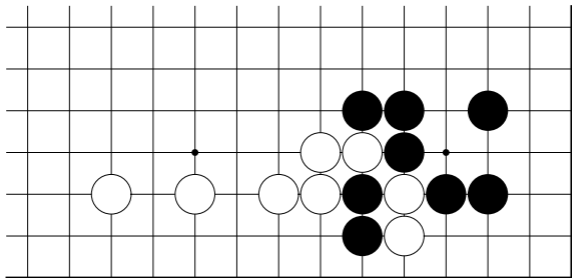
14 目

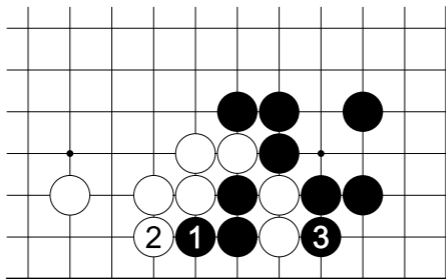




14 目

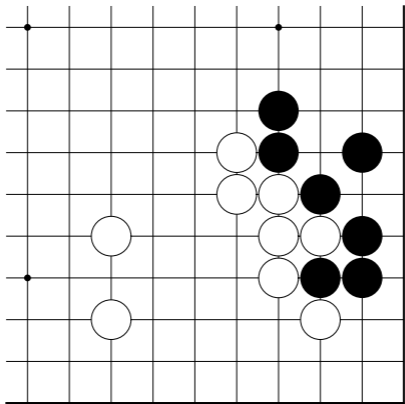
14 目



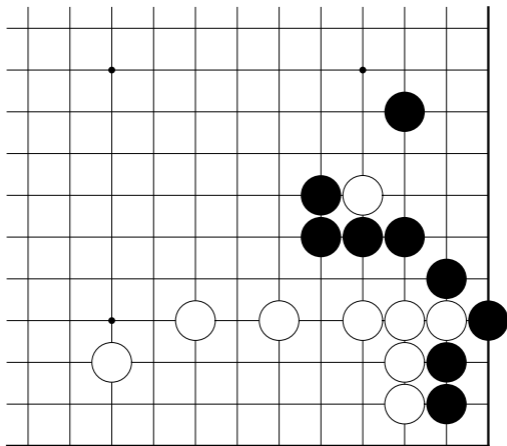


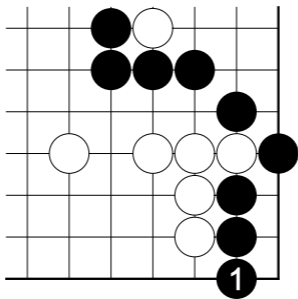
14 目

14 目



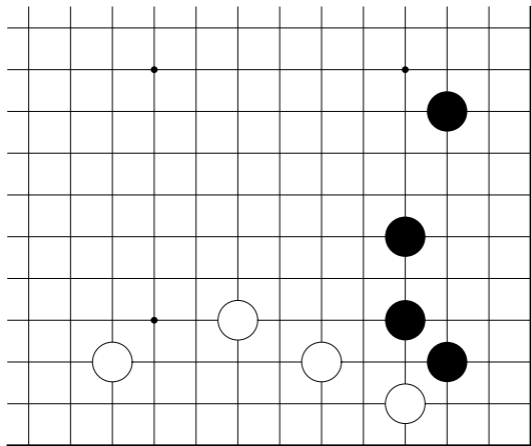
14 目

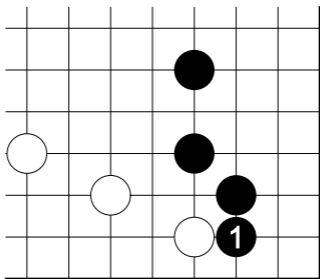




14 目

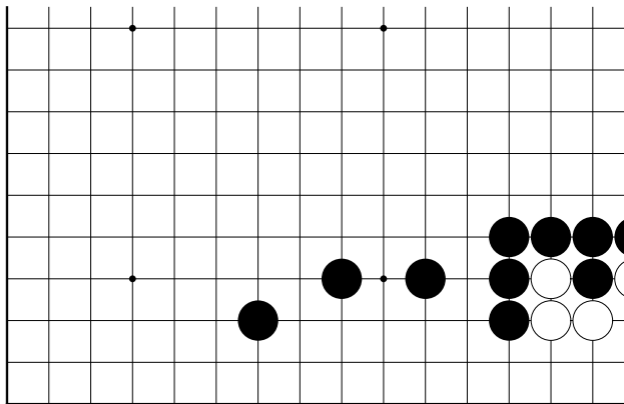
约 16 目

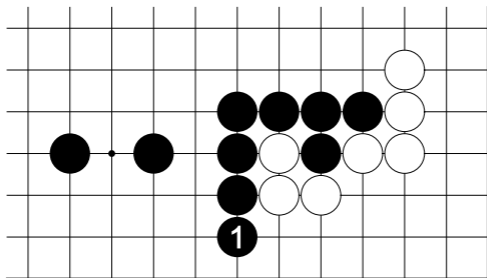




约 16 目

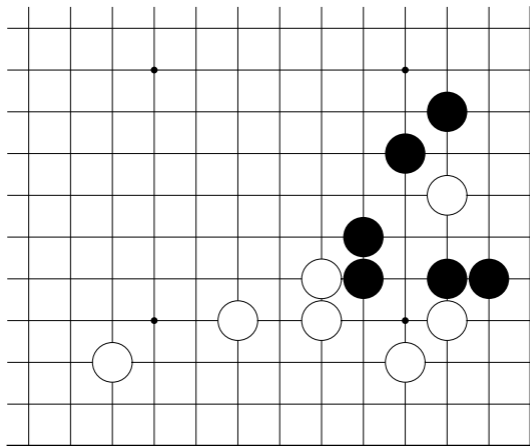
16 目

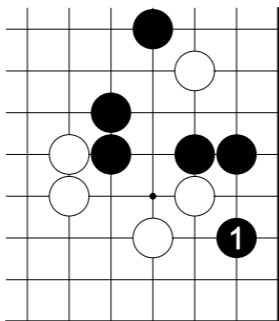




16 目

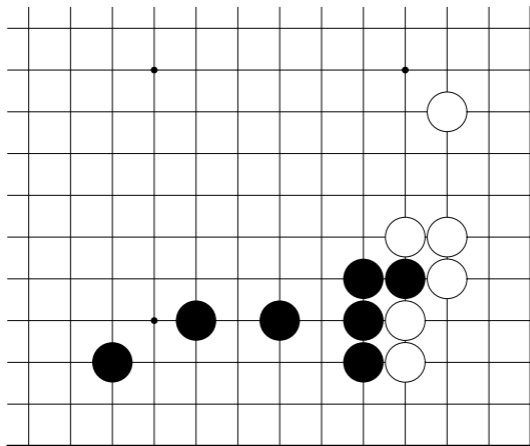
16 目

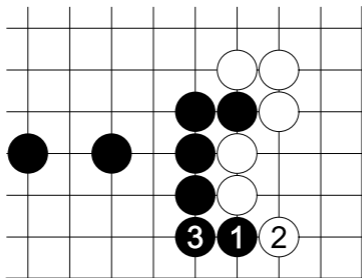




16 目

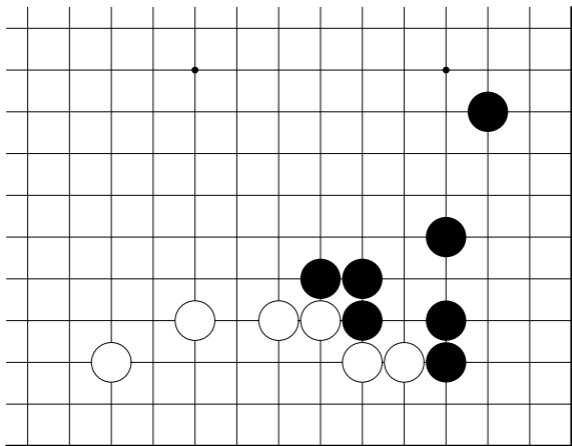
17 目

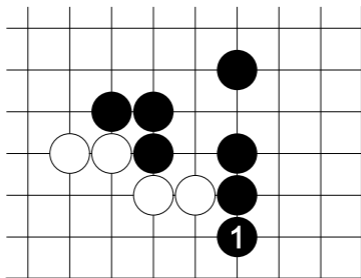




17 目超级二路扳粘。

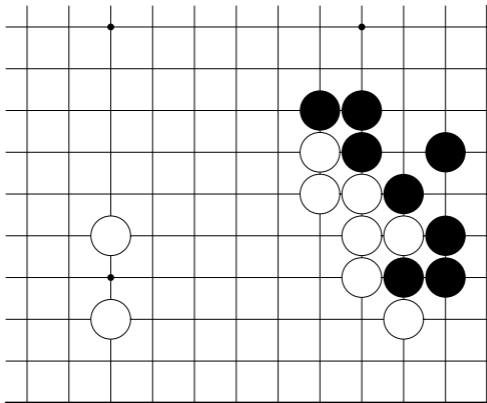
17 目

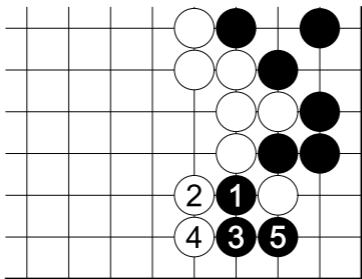




17 目

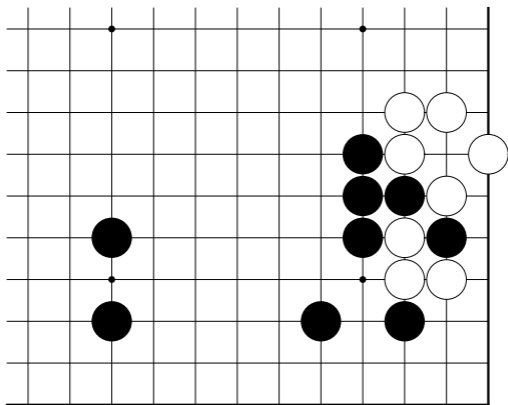
约 17 目

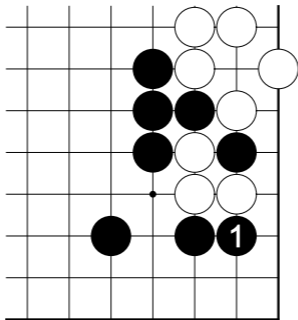




约 17 目

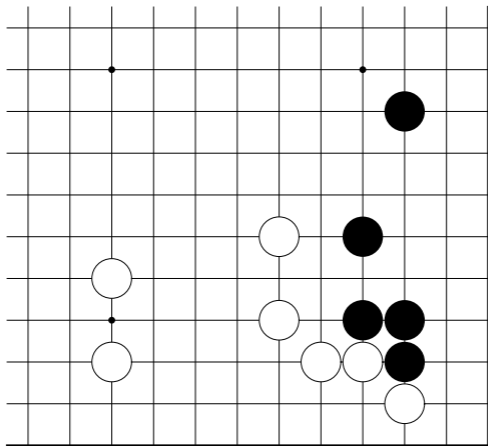
约 17 目

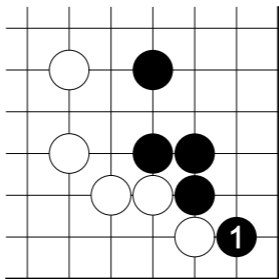




约 17 目

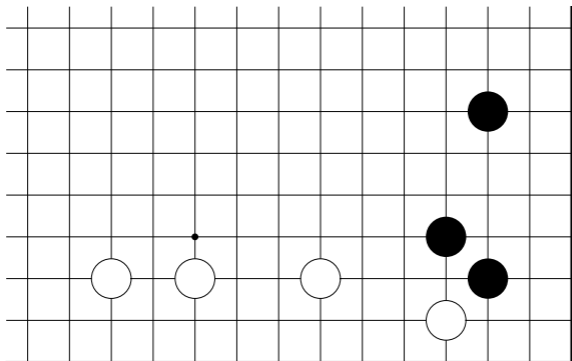
约 18 目

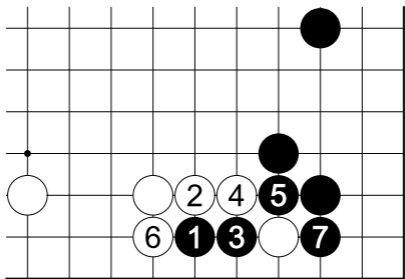




约 18 目

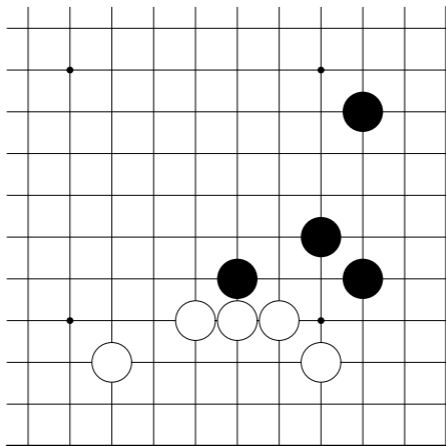
约 18 目

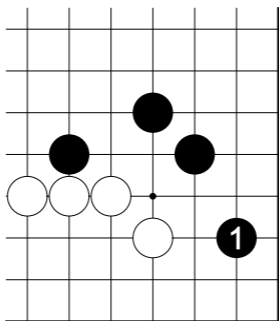




约 18 目

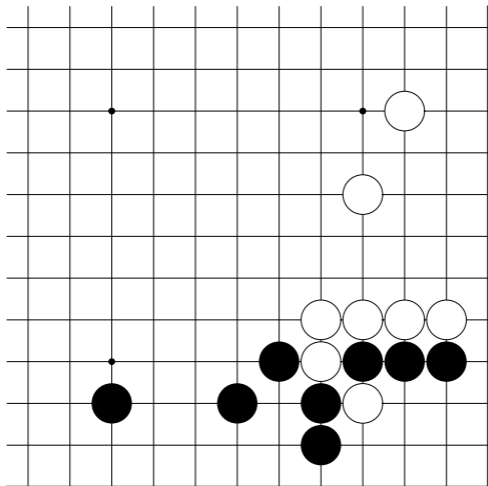
18 目

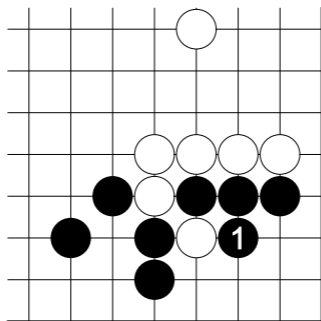




18 目

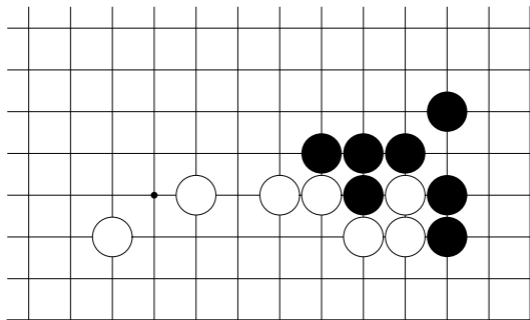
18 目

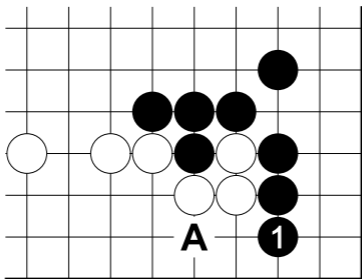




18 目

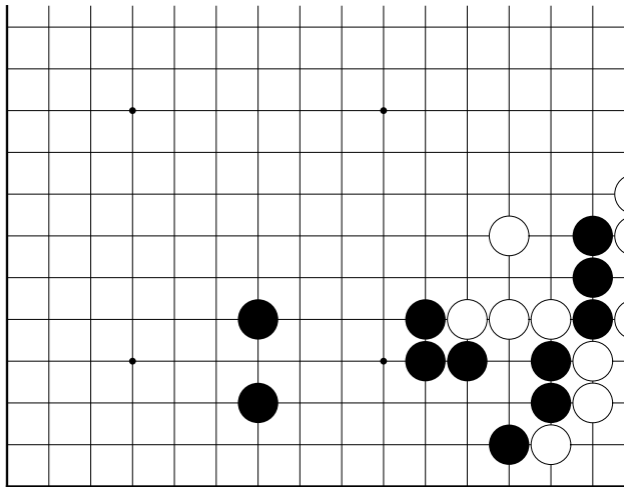
19 目

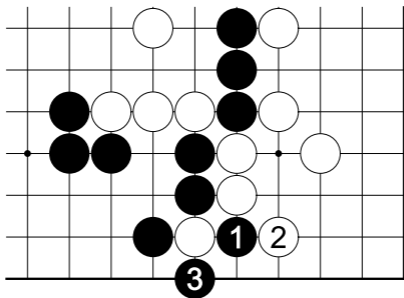




19 目瞄着 A 位夹，由于撞紧气，注意与 166 图的差别。

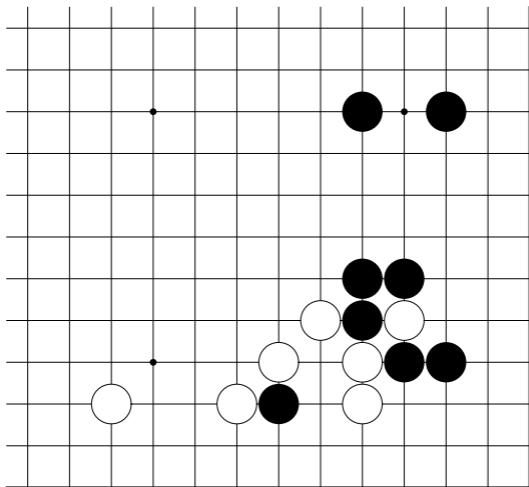
20 目以上

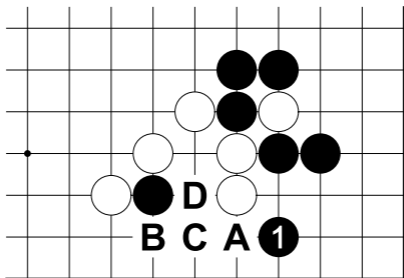




20 目以上

约 24 目





约 24 目之后黑 a 至白 d。